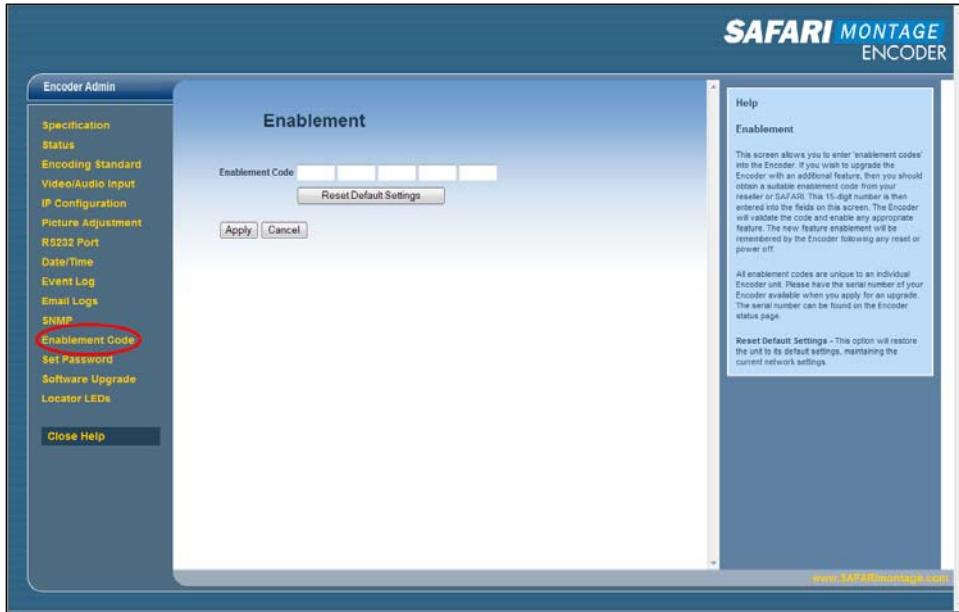


Instructions for Enabling the HD Features of a SAFARI Montage Digital Encoder (SD only)

1. Open a Web browser and type in the IP address of the SAFARI Montage Encoder.
2. From the left-hand navigation, click on **Enablement Code**.



3. Enter the supplied enablement code into the **Enablement Code** field and click on the **Apply** button.
4. Verify that HD has been enabled by clicking on **Status** from the left-hand navigation.

Looking at the encoder's part number, if the last two characters are **HD**, the unit now has HD functions enabled.

Support:

For assistance with SAFARI Montage or the SAFARI Montage Digital Encoder, please contact SAFARI Montage Technical Support by calling (800) 782-7230 or by visiting <http://www.safarimontage.com/support>.