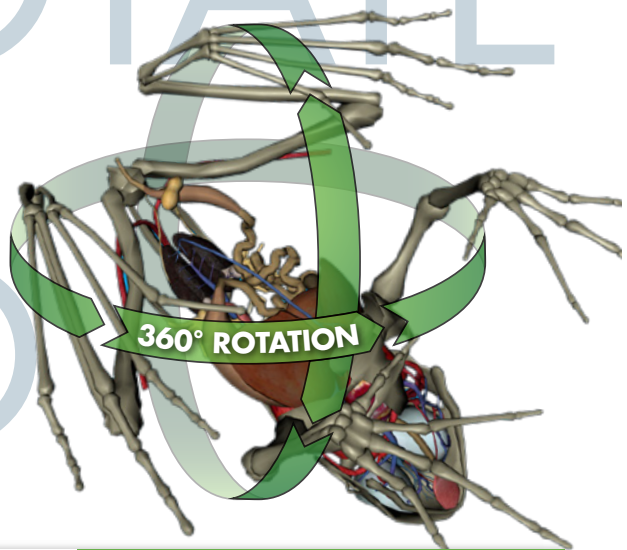
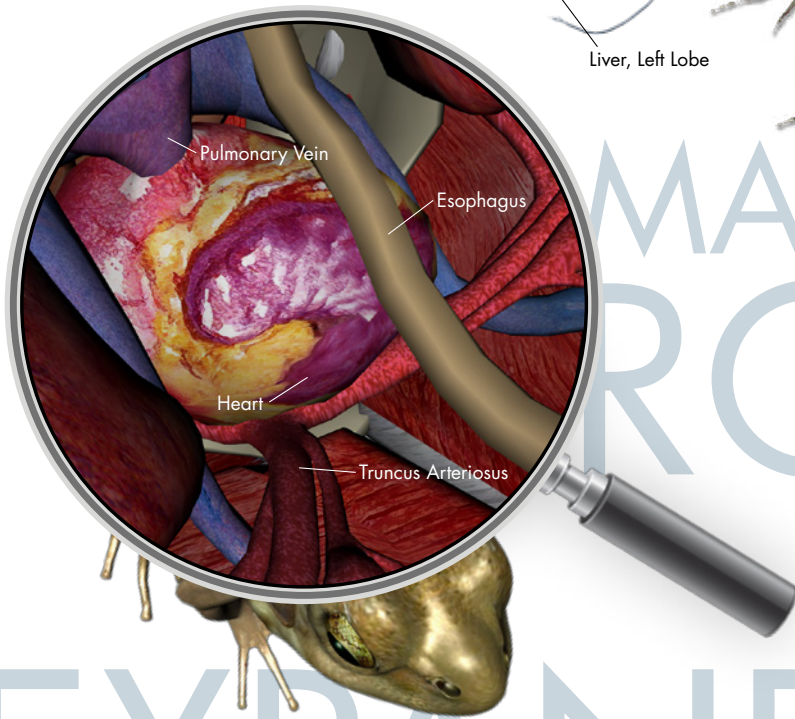
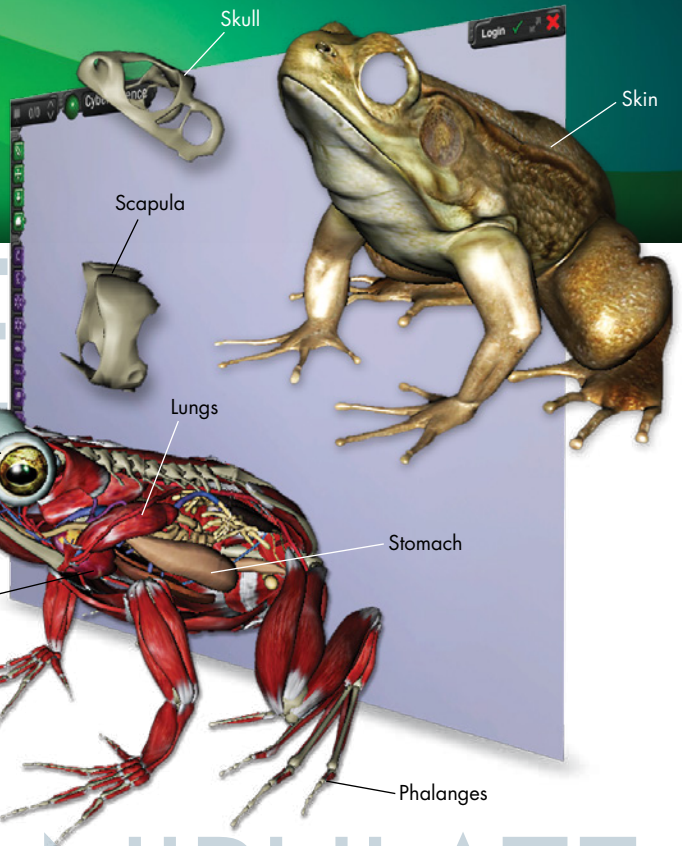


Cyber-Science

Interactive 3D Model Package (2013)

EXPLORE
DISSECT

MANIPULATE
ROTATE
EXPAND



NEW!

MANIPULATE **OVER 180 MODELS** AND
CREATE HUNDREDS OF 3D ANIMATIONS
NO SPECIAL 3D GLASSES, GRAPHICS CARD OR PROJECTOR IS REQUIRED!

75 New 3D Models!
Covering subject areas of biology, chemistry,
microbiology, engineering and more

SAFARI
MONTAGE

800.843.4549 • SAFARIMontage.com • P.O. Box 680, Conshohocken, PA 19428

CONTINUED ON OPPOSITE SIDE ➤

Over 180 Models

GRADES K-12

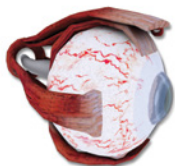
Interactive 3D models cover subject areas of botany, human anatomy, zoology, microbiology, earth science, chemistry, engineering and more. There are over 180 detailed interactive 3D models, which include over 22,000 labeled components. Interactive 3D models contain:

- All of the major human anatomical systems
- Frog
- Fetal pig
- Cat
- Earthworm
- Starfish
- Plant cell
- Hydrogen fuel cell
- Volcano
- Monarch butterfly and more!

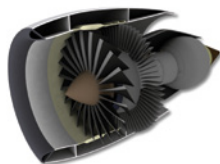
New models include:

- Quantum Shells
- Amphetamine
- Aquifer
- Cave
- Frog Evolution
- Water
- Horse
- Nerve
- Neural Network
- Nephron
- Penicillin
- Sucrose
- Water Cycle

Go to www.SAFARIMontage.com for a full list of models.



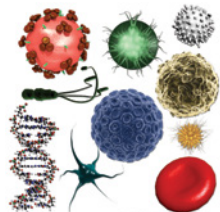
EYE



JET ENGINE



STEAM TRAP



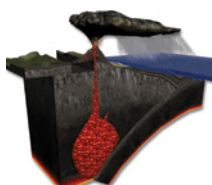
MICROBIOLOGY



URINARY SYSTEM



FETAL PIG



VOLCANO



HUMAN BODY

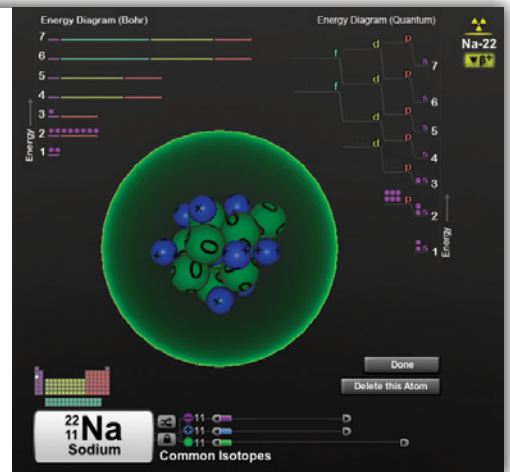
Create your own 3D animations!



3D Animator

Teachers and students can create amazing 3D animations with the 3D Animator tool. Take snapshots of different model views and layers, and add them to the 3D Animator thumbnail storyboard. The 3D Animator tool will automatically animate the captured sequence and play it back for a dynamic presentation. Add text, videos and more to the 3D animations for an even greater interactive experience. The captured 3D animations can be uploaded via SAFARI Montage CreationStation® to share with teachers and students throughout the school and the district.

Explore the elements of the Periodic Table with the new Atom Sandbox interactive 3D model



3D interactive (non-stereo) version

Cyber-Science interactive 3D models were originally created for medical school students and go far beyond the quality of any interactive learning tool ever created for K-12. These interactive 3D science models are visually thrilling and create an excitement around learning that is unparalleled among other forms of media. One of the most significant aspects of these interactive 3D models is that no glasses are required to experience a three-dimensional effect and become highly immersed, therefore increasing the level of student interest and retention of subject matter.

SYSTEM REQUIREMENTS

- Cyber-Science 4.0 Player
- SAFARI Montage® v.5.7 or higher *Existing customers must upgrade to SAFARI Montage v.5.7 or higher to access*

WORKSTATION

- Intel® Core™ 2 Duo, Core i3, Core i5, Core i7, or Xeon® processor
- 2 GB RAM (Mac OS®)
- 1 GB RAM (Windows OS)
- 750 MB free disk space

OPERATING SYSTEM

- Windows® 8
- Windows® 7
- Windows Vista® SP2
- Windows XP SP3
- OS X 10.6 to 10.9

GRAPHICS

- Graphics card with 128 MB of Video RAM and DirectX® 9 level (Shader model 2.0) capabilities