

VideoLAN VLC Media Player Compatibility

Review any questions with Technical Support before continuing. Please note that SAFARI Montage Technical Support is available Monday – Friday from 8 a.m. to 6 p.m. Eastern Time, and they may be contacted by telephone at 800-782-7230 or online via <http://www.safarimontage.com/support>.

Overview:

When installed on client computers, the SAFARI Montage® Media Player is compatible with the use of the VideoLAN VLC media player for streaming media playback.

Please note that the SAFARI Montage Media Player does not contain the VLC media player files and that the customer is solely responsible for the distribution of, and obtaining any licensing for, the use of VLC Media Player files.

With the introduction of SAFARI Montage v5.9, the SAFARI Montage Media Player (SMMP) now accommodates the use of a specific version of VLC libraries when placed in the SMMP program directory. VLC libraries need only to be copied to the SMMP program folder and it's expected that most districts will simply include VLC libraries as part of their imaging process or push out as part of their normal workstation update process.

If the VLC libraries are not found in the SMMP subdirectory, SMMP will attempt to use a full version of VLC if installed on client computers.

SAFARI Montage tests the compatibility of specific versions of the VLC media player libraries, and strongly recommends that districts deploy a specific set of VLC libraries in the SAFARI Montage Media Player subdirectory to avoid conflict with a separately installed full version of VLC.

For districts that rely upon end users to install plug-ins, SAFARI Montage also provides a facility to support this and allows a district to add a URL, pointing to the VLC libraries that they wish to copy to the SMMP program sub-folder, but this is not a requirement.

To confirm the current version of VideoLAN VLC Media Player that is compatible with SAFARI Montage Media Player, review system requirements at <http://www.safarimontage.com/support>.

At the time of this document, the following are the compatible versions of VLC:

- VideoLAN VLC media player Version 3.0.8 (Windows all versions), available at <http://download.videolan.org/pub/videolan/vlc/3.0.8/win32/vlc-3.0.8-win32.zip>
- VideoLAN VLC media player Version 2.2.6 (OS X all versions), available at <http://download.videolan.org/pub/videolan/vlc/2.0.10/macosx/vlc-2.0.10-intel32.dmg>

Instructions:

It's expected that most districts will include the deployment of VLC libraries in general workstations imaging or updates.

If Imaging Computers:

1. Install the SAFARI Montage Media Player.
2. Copy the VLC libraries according to the instructions below for each platform.

For workstations running Microsoft® Windows®

- a. Extract the contents of the downloaded **vlc-3.0.8-win32.zip** to the follow location:

SAFARI Montage® VideoLAN VLC Media Player Compatibility

- C:\Program Files (x86)\SAFARI Montage\SAFARI Montage Media Player\

For workstations running Apple® OS X

- a. Mount the downloaded **vlc-2.0.10-intel32.dmg**.
- b. Copy VLC (actual file name is VLC.app) to the following location:
 - /Library/Internet Plug-Ins/SAFARIMontagePlayer.plugin/Contents/Resources

If Distributing via Configuration Management:

1. Configure distribution system to install the SAFARI Montage Media Player, QuickTime, and expand or copy, platform dependent, VLC to one of the locations below.

For distribution to Microsoft Windows

- a. Extract the contents of **vlc-3.0.8-win32.zip** to the follow location:
 - C:\Program Files (x86)\SAFARI Montage\SAFARI Montage Media Player\

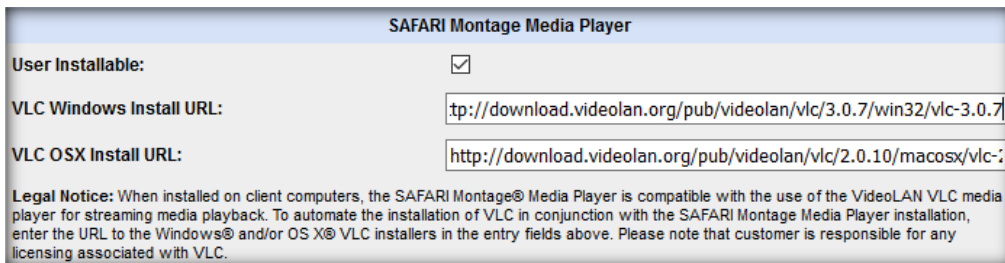
For distribution to Apple OS X

- a. Copy VLC.app from the mounted **vlc-2.0.10-intel32.dmg** to the following location:
 - /Library/Internet Plug-Ins/SAFARIMontagePlayer.plugin/Contents/Resources

For districts that rely on or allow end-users to install plug-ins themselves, SAFARI Montage provides support for this as well.

To copy the VLC Media Player libraries using this method, perform the following:

1. Login, as an administrator to a SAFARI Montage server.
2. Navigate to **ADMIN -> System**.
3. Configure the VLC Install URLs, under **SAFARI Montage Media Player** with the following VLC library locations and click Save.
 - **Windows** <http://download.videolan.org/pub/videolan/vlc/3.0.8/win32/vlc-3.0.8-win32.zip>
 - **OSx** <http://download.videolan.org/pub/videolan/vlc/2.0.10/macosx/vlc-2.0.10-intel32.dmg>



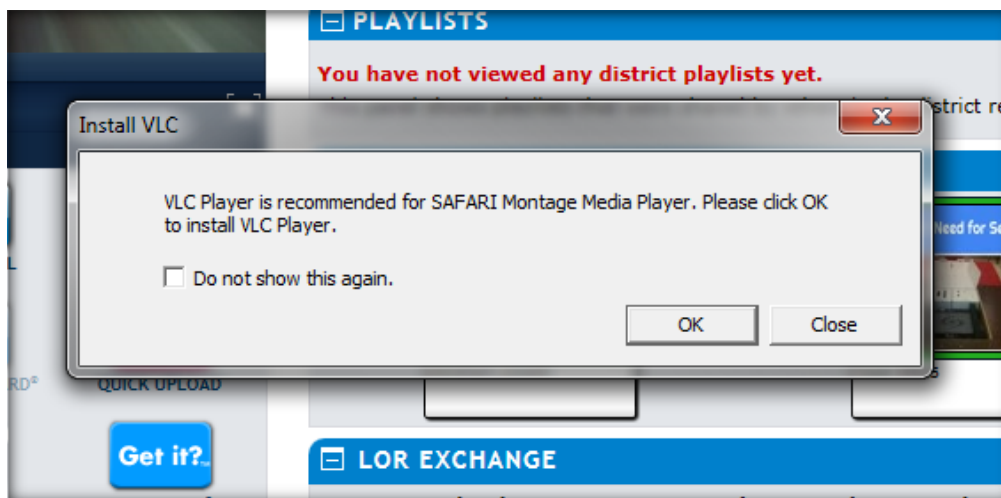
The screenshot shows a configuration window titled "SAFARI Montage Media Player". It has a "User Installable:" checkbox which is checked. Below it are two text input fields: "VLC Windows Install URL:" containing "tp://download.videolan.org/pub/videolan/vlc/3.0.7/win32/vlc-3.0.7" and "VLC OSX Install URL:" containing "http://download.videolan.org/pub/videolan/vlc/2.0.10/macosx/vlc-". At the bottom, there is a "Legal Notice" paragraph.

SAFARI Montage® VideoLAN VLC Media Player Compatibility

- End users may copy the above version of the VLC Player libraries by navigating to the Dashboard, right-clicking on the SAFARI Montage Media Player (this step can be completed from any instance of the SAFARI Montage Media Player) and selecting Install VLC.



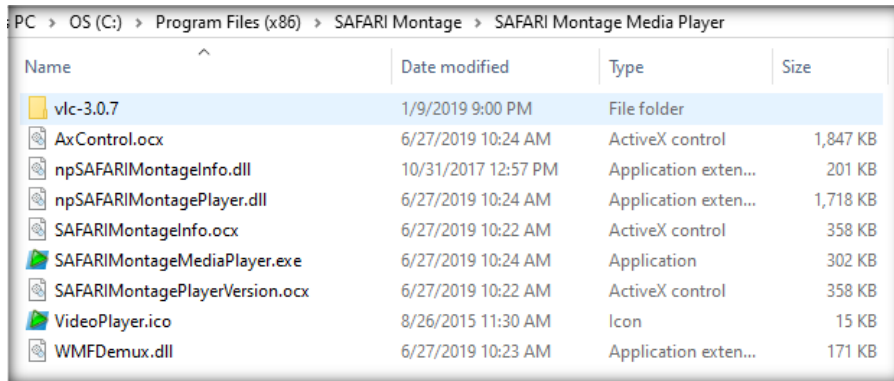
- Click OK when prompted to install VLC Player version 3.0.7.



- Download and extraction of the entered VLC Player will begin. There is no visual representation of the download. The download is complete when the Install VLC prompt closes and a window showing file extraction appears. There is no messaging of completion. The process is complete when the extraction dialog closes.

SAFARI Montage® VideoLAN VLC Media Player Compatibility

7. Verify the VLC libraries copied by navigating to C:\Program Files (x86)\SAFARI Montage\SAFARI Montage Media Player. The folder vlc-3.0.8 now exists, which the SAFARI Montage Media Player will use regardless of any other version of VLC Player installed.



| Name | Date modified | Type | Size |
|--------------------------------|---------------------|----------------------|----------|
| vlc-3.0.7 | 1/9/2019 9:00 PM | File folder | |
| AxControl.ocx | 6/27/2019 10:24 AM | ActiveX control | 1,847 KB |
| npSAFARIMontageInfo.dll | 10/31/2017 12:57 PM | Application exten... | 201 KB |
| npSAFARIMontagePlayer.dll | 6/27/2019 10:24 AM | Application exten... | 1,718 KB |
| SAFARIMontageInfo.ocx | 6/27/2019 10:22 AM | ActiveX control | 358 KB |
| SAFARIMontageMediaPlayer.exe | 6/27/2019 10:24 AM | Application | 302 KB |
| SAFARIMontagePlayerVersion.ocx | 6/27/2019 10:22 AM | ActiveX control | 358 KB |
| VideoPlayer.ico | 8/26/2015 11:30 AM | Icon | 15 KB |
| WMFDemux.dll | 6/27/2019 10:23 AM | Application exten... | 171 KB |

Other Helpful Information:

Using the SAFARI Montage Media Player log to determine which VLC libraries are being used by SMMP.

SMMP log with system installed VLC player and VLC player in the SAFARI Montage Media Player directory

```
08:00:30 - Detected primary
08:00:31 - CVLCEngine - rtp://@239.21.230.200:1234 0 356400 eng run: 1
08:00:31 - Found vlc-3.0.8
08:00:31 - Loading VLC from C:\Program Files (x86)\SAFARI\Montage\SAFARI Montage Media Player\vlc-3.0.8
08:00:31 - LibVLC loaded successfully from our sub folder
08:00:31 - Vlc args
```

SMMP Log with system installed VLC Player

```
07:52:50 - Detected primary
07:52:51 - CVLCEngine - rtp://@239.21.230.200:1234 0 356400 eng run: 1
07:52:51 - LibVLC loaded successfully from system install
07:52:51 - Vlc args
```