

Instructions for Installing the SAFARI Montage® SuperSet XXVIII Content Drive

CONTENTS

- SAFARI Montage SuperSet XXVIII Content Drive(s)

PLEASE READ THESE INSTRUCTIONS IN THEIR ENTIRETY BEFORE YOU BEGIN:

- Review any questions with Technical Support in advance. Please note that SAFARI Montage Technical Support is available Monday – Friday from 8 a.m. to 6 p.m. Eastern Time, and they may be contacted by telephone at 800-782-7230 or online via <http://www.safarimontage.com/support>.

Upgrade Instructions:

1. Shut down the SAFARI Montage server:
 - a. Navigate to **Admin** → **Tools** → **Reboot and Shut Down**.
 - b. Click on the **Shut Down** button and verify that you are shutting down the server.If performing the server shut down from the console:
 - a. Select option **#3**, followed by option **#7**.
2. Remove all content drives from the server.
3. Insert the received SuperSet XXVII Content Drive into the next available open bay of the server. Make sure that the sled latch clicks into place, ensuring proper drive seating.
4. Power on the server.

Note: For customers using the following servers, additional steps are needed during server boot up: Instructions for these additional steps can be found starting on **Page 3**.

- | | |
|-----------|-------------|
| • T-420 | • RM-640X |
| • T-440X | • WAN-880X |
| • RM-126X | • WAN-1240 |
| • RM-440X | • WAN-1212X |
| • RM-640 | • WAN-1212 |

For the above listed servers, Virtual Disk Management will need to be configured. To do so, perform the following:

- a. Press "**C**" when prompted, regarding the finding of a foreign configuration or missing VD's.
 - b. Use the arrow keys, and navigate through the PERC adapter BIOS screen to select **Controller 0**.
 - c. Press the **F2** key to open a sub-menu, and choose **Foreign Config** from the options.
 - d. Select **Import** from the Foreign Config sub-menu.
 - e. Use the arrow keys to select **Yes**, and press the enter key.
 - f. Press the ESC key and then select OK.
 - g. Press <CTRL +ALT+DEL> to reboot the server.
5. Login to SAFARI Montage and activate all the new packages – **ADMIN** > **Content & Modules** > **Activate ALL**.

Note: New package licensing has been pre-entered and is ready to activate when the new content drive has been installed.

For customers using the **SAFARI Montage WAN Manager** module, continue with **Steps 6 and 7**; otherwise, skip to **Step 8**.
 6. Assign new packages, mirroring assignments for retiring packages – **ADMIN** > **WAN Manager** > **Schools**. A package map of new and retiring packages is on page 2.
 7. Un-assign retiring packages from all schools – **ADMIN** > **WAN Manager** > **Schools**.
 8. Deactivate retiring packages – **ADMIN** > **Content & Modules** > **Content Packages**.
 9. Remap Playlists and Lessons by navigating to **ADMIN** > **Tools** > **System Volumes** and clicking on the **Map Playlist and Lesson Items** link.

~ THIS COMPLETES THE DRIVE INSTALLATION PROCESS ~

PACKAGE MAP

Notes:

- 300K Spanish packages may be omitted for customers that have licensed the following as Spanish titles are now included in the 300K versions of these packages. For all other packages, 300K Spanish package must remain.
 - K-8 Super Core (6-2013)
 - 9-12 Super Core (6-2013)
 - K-12 Super Core (6-2013)
 - 9-12 Expansion (6-2013)
- Each package listed below refers to all formats and bit rates for the noted package.

New Packages Will Activate Upon "Activate All"		Replaces These Package(s), Which Are to Be Unassigned & Deactivated
G1129B05xx – Core K-8 Content Package (2013)	>	All prior versions of Core K-8 Content Packages All prior versions of Reading Rainbow Content Packages G1306B01xx Eyes on the Prize Content Packages
G19803xx – K-8 Super Core (6-2013)	>	All prior versions of Core K-8, K-8 Super Core, Reading Rainbow, Eyes on the Prize and K-6 Supplemental , whose new name is K-8 Expansion .
G198102xx – K-8 Expansion (6-2013)	>	All prior versions of K-6 Supplemental All prior versions of K-8 Expansion
G1133B04xx - Core 9-12 Content Package (2013)	>	All prior versions of 9-12 Core Content Packages G1306B01xx Eyes on the Prize Content Packages
G1298B05xx - 9-12 Super Core Content Package (6-2013)	>	All prior versions of 9-12 Super Core Content Packages G1306B01xx Eyes on the Prize Content Packages All versions of Additional SM 9-12 G1121 G1298S02MN 9-12 Super Core Content Package (Spanish)
G129405 – 9-12 Expansion (6-2013)	>	All prior versions of 9-12 Expansion All versions of Additional SM 9-12
G1125B05xx - CORE K-12 Content Package (2013)	>	All prior versions of Core K-12 Content Packages All prior versions of Reading Rainbow Content Packages G1306B01xx Eyes on the Prize Content Packages
G131805xx - K-12 Super Core Content Package (6-2013)	>	All prior versions of Core K-12 Content Packages, K-12 Super Core Content All prior versions of Reading Rainbow Content Packages G1306B01xx Eyes on the Prize Content Packages All versions of Additional SM 9-12 G1121 G1311S02MN K-12 Super Core Content Package (Spanish)
G126404xx - Cyber-Science Interactive 3D Model Package (2013)	>	All prior versions of Cyber-Science Interactive 3D Model Package
G1208B02xx – Math'scool Content Package (2012)	>	All prior versions of Math'scool Content Package
G1204B02xx – Algebra'scool Content Package (2012)	>	All prior versions of Algebra'scool Content Package
G9605B01GN – Digital Resources From NASA	>	All prior versions of Images From NASA
G961502 – U.S. Fish & Wildlife Service Photographs (2013)	>	Prior version of U.S. Fish & Wildlife Service Photographs
G118302N – The World Factbook (2014)	>	Prior version of The World Factbook

For the following servers, Virtual Disk Management will need to be configured:

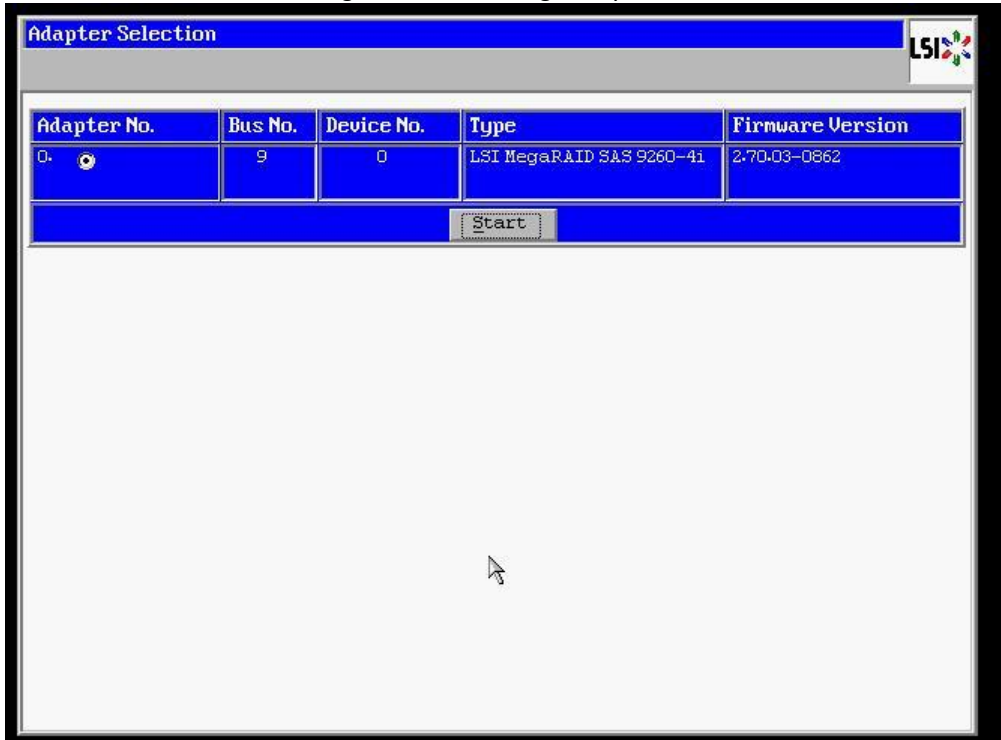
- T-420
- T-440X
- RM-126X
- RM-440X
- RM-640
- RM-640X
- WAN-880X
- WAN-1212X
- WAN-1240

To configure the Virtual Disk Management, perform the following on system boot:

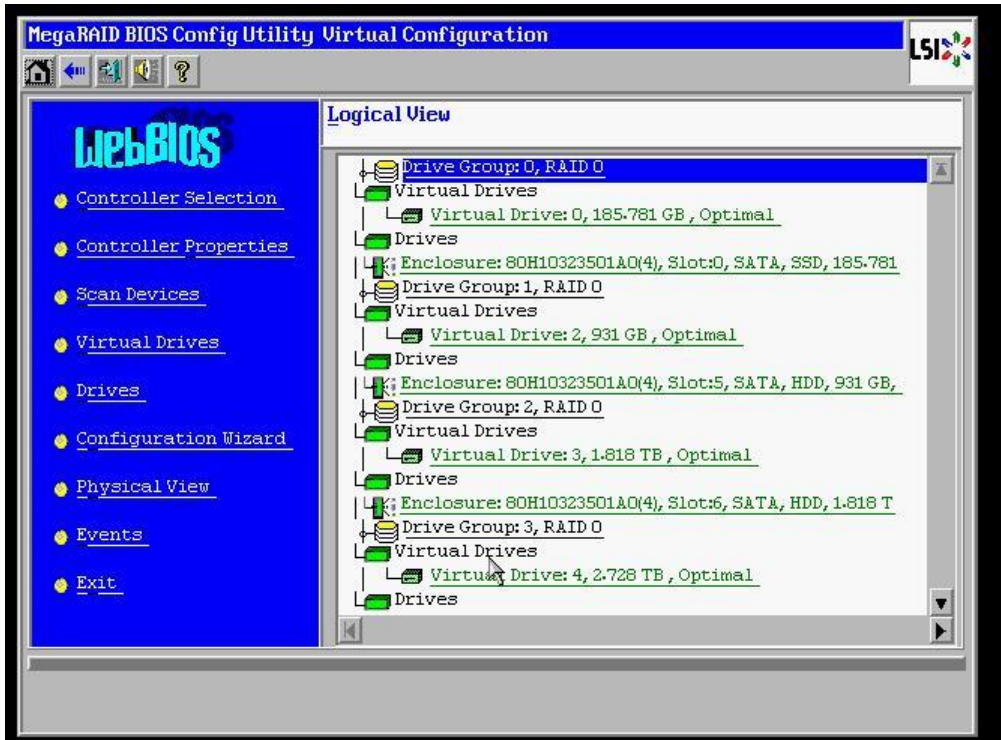
1. Press "**C**" when prompted regarding a foreign configuration has been found or VD's are missing.
2. Use the arrow keys and navigate the PERC adapter BIOS screen and select **Controller 0**.
3. Press the **F2** key to open a sub-menu and choose **Foreign Config** from the options.
4. Select Import from the Foreign Config sub-menu.
5. Use the arrow keys and select **Yes** and press the enter key.
6. Press the ESC key and select OK.
7. Press <CTRL +ALT+DEL> to reboot the server.

For the WAN-1212 server, MegaRAID Bios will need to be configured. To configure the MegaRAID BIOS, perform the following on system boot:

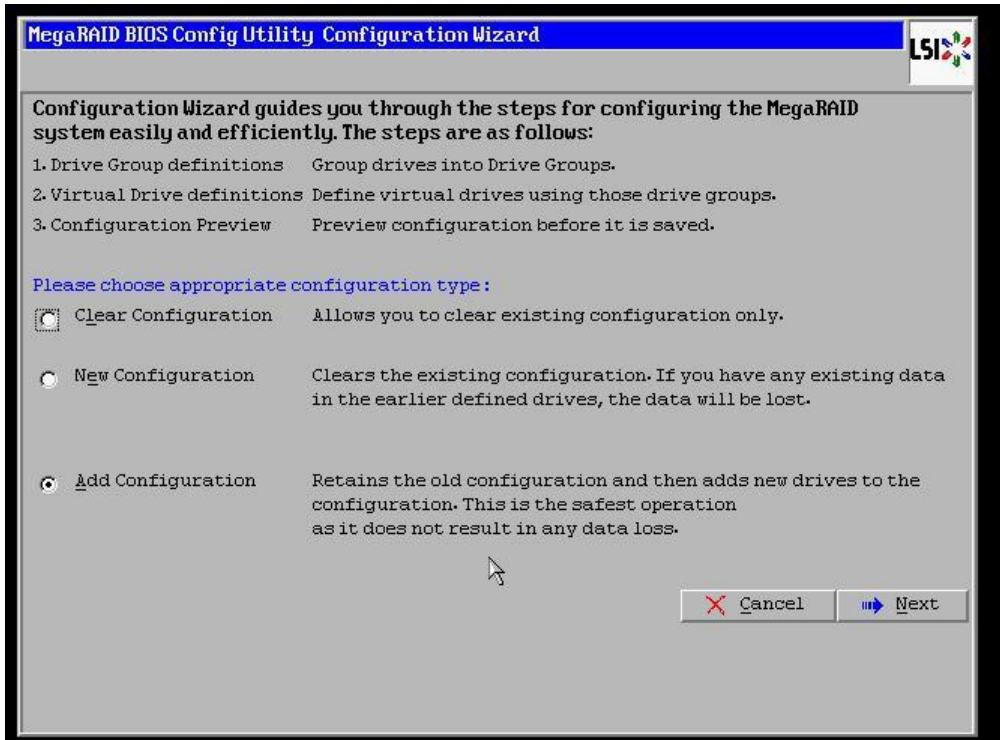
1. Press "C" when prompted, regarding the finding of a foreign configuration or missing VD's.
Note: Access to the LSI MegaRAID SAS controller can also be initiated by pressing <Ctrl>+<H> when prompted.
2. Click **Start** button to access MegaRAID BIOS Config Utility.



3. Click **Configuration Wizard** link from Navigation to access to the Configuration Wizard.



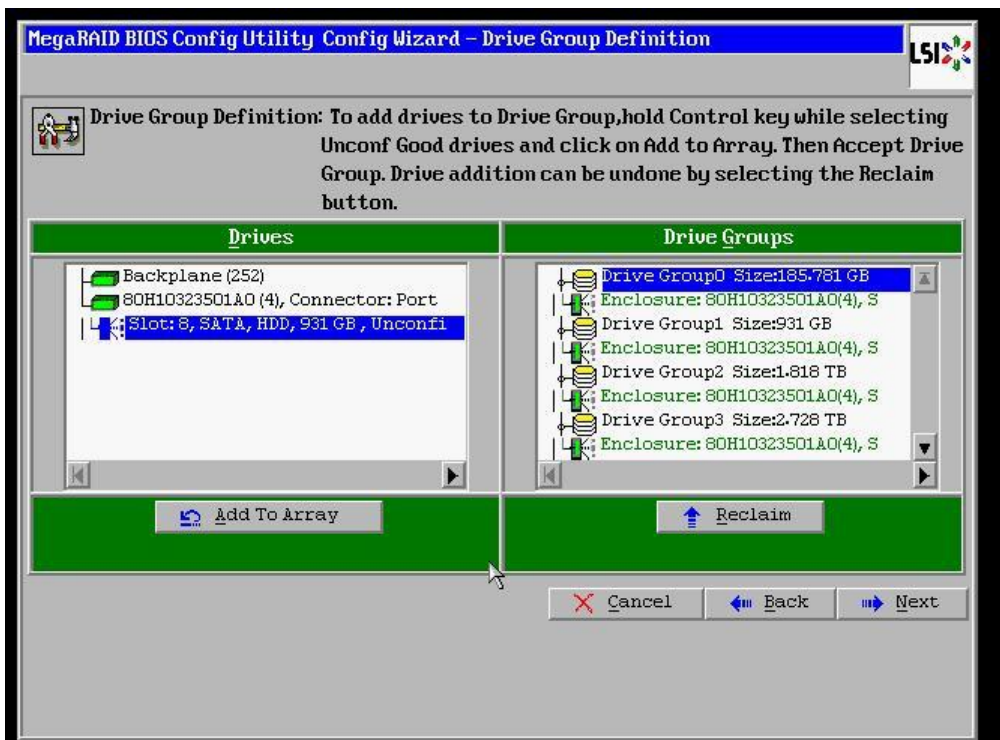
4. Select **Add Configuration** and click **Next**.



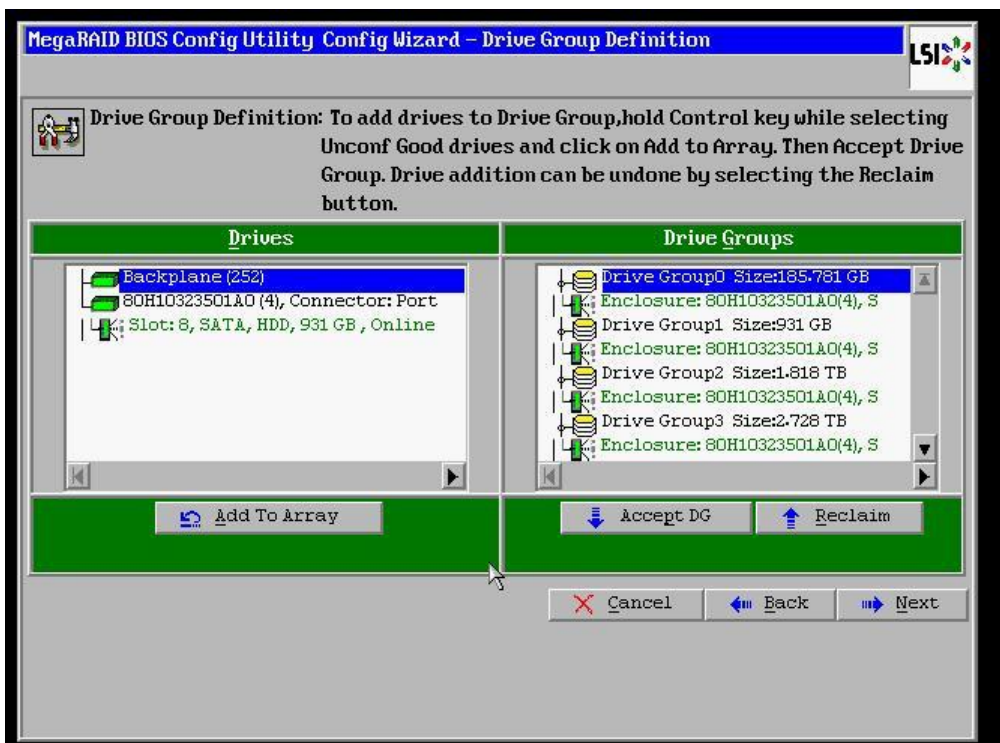
5. Select **Manual Configuration** under the Configuration Method and click **Next** to continue.



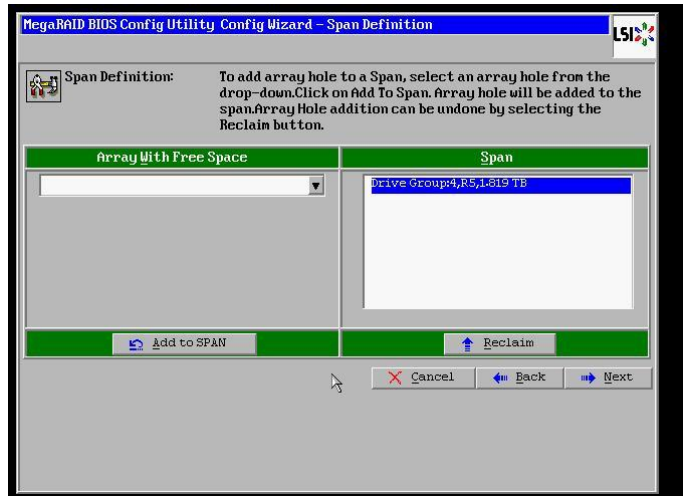
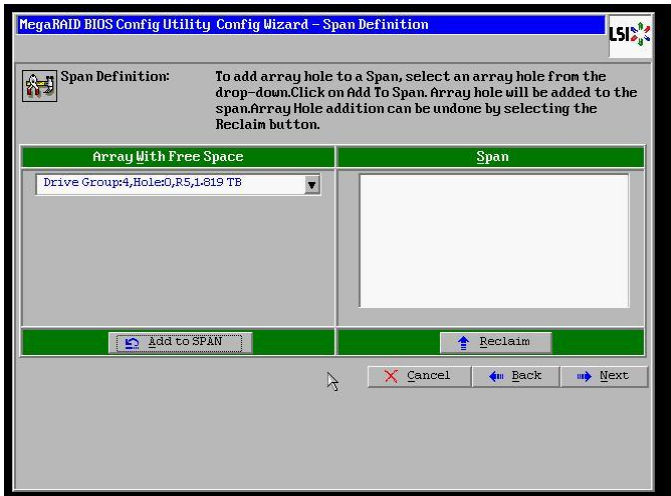
6. Select the install hard drive from the **Drives** list and click the **Add to Array** button.



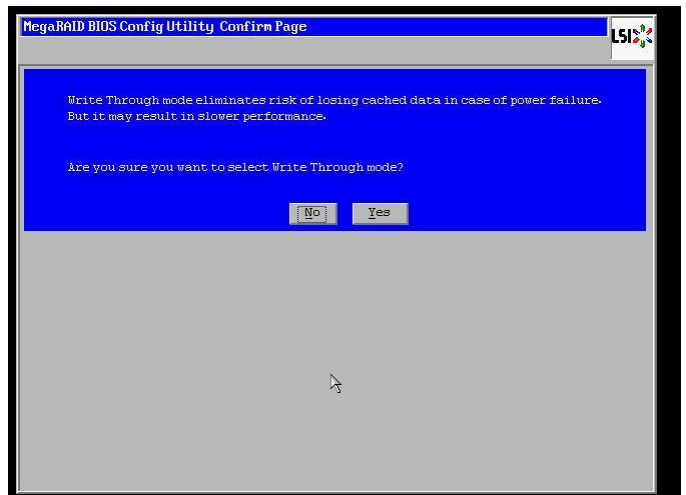
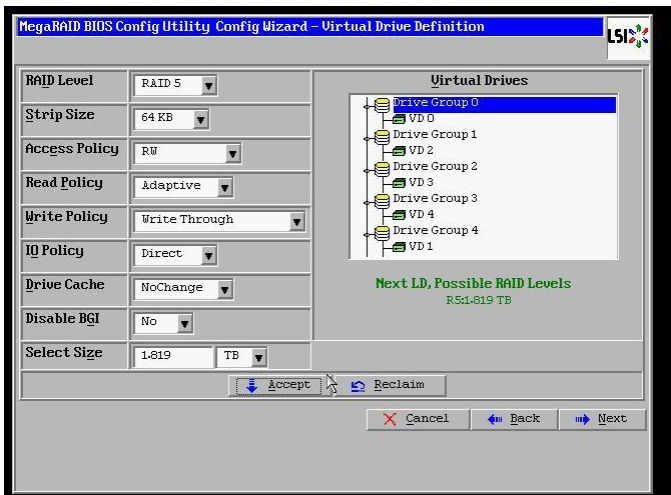
7. Click on the **Accept DG** button, to accept the Drive Group from under the **Drive Groups** and click **Next** to continue.



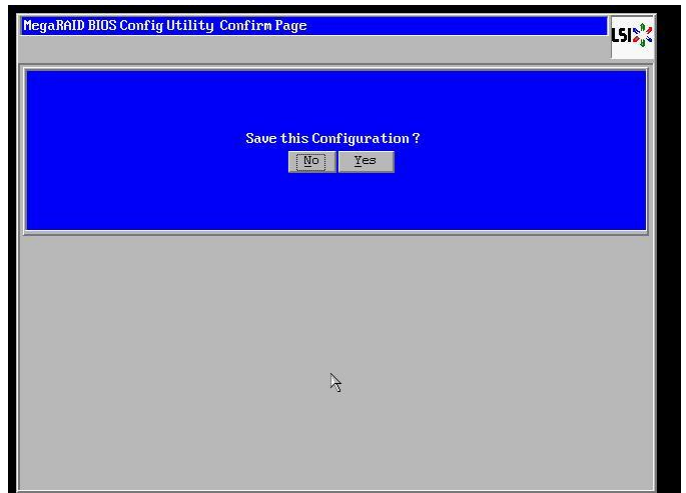
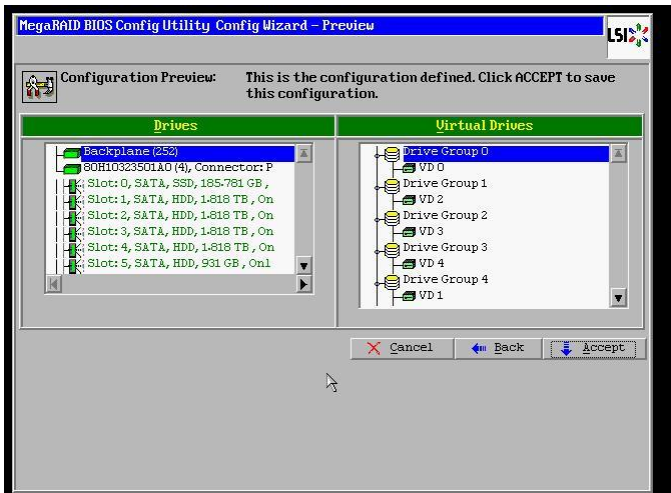
- Select the hard drive from the **Array With Free Space** drop down and click the **Add to SPAN** button. Click **Next** to continue.



- Click on the **Accept** button to save the drive configuration. Click on the **Yes** button when prompted regarding use of **Write Through mode**. Click on **Next** to continue.



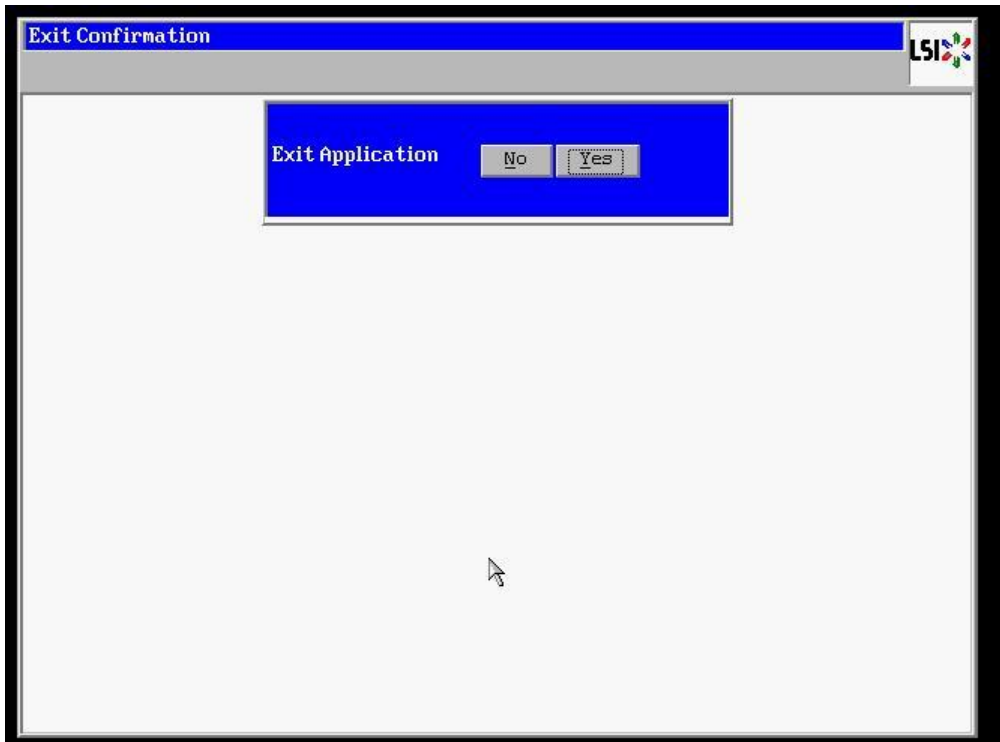
- Click **Accept** to save the virtual drive configuration. Click **Yes** to confirm the save.



11. Click **No** when asked to initialize the virtual drive.



12. Click on the **Exit** link, from the left-hand navigation, followed by clicking the **Yes** button.



13. Press <CTRL>+<ALT>+<DELETE> to restart the server.

