

Instructions for Installing the SAFARI Montage® SuperSet XXX Supplemental Drive

OVERVIEW

The SAFARI Montage SuperSet XXX Supplemental drive you have just received works in conjunction with earlier release SuperSet content drive(s) to provide new content to your SAFARI Montage server.

CONTENTS

- SAFARI Montage SuperSet XXX Supplemental Content Drive

PREREQUISITES:

- SAFARI Montage 5.9.28
- Any combination, high or low resolution, of the following previously released SuperSets:
 - SuperSet XX
 - SuperSet XXI
 - SuperSet XXII
 - SuperSet XXIII
 - SuperSet XXIV
 - SuperSet XXV
 - SuperSet XXVI
 - SuperSet XXVII
- Available drive bay

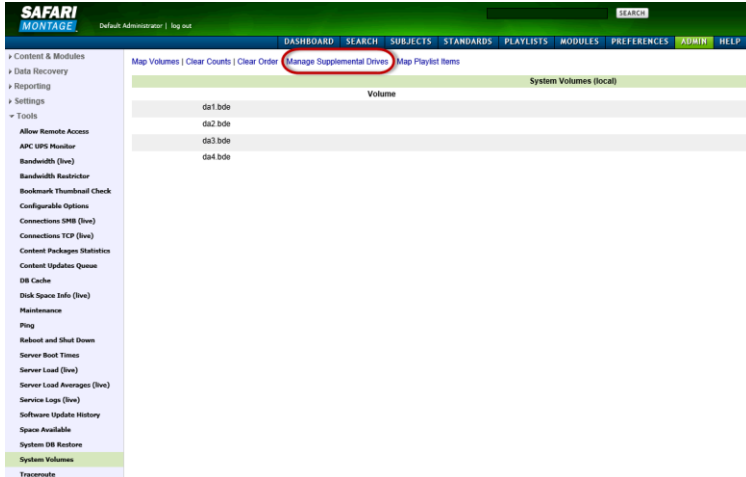
PLEASE READ THESE INSTRUCTIONS IN THEIR ENTIRETY BEFORE YOU BEGIN:

- Review any questions with Technical Support in advance. Please note that SAFARI Montage Technical Support is available Monday – Friday from 8 a.m. to 6 p.m. Eastern Time and they may be contacted by telephone at 800-782-7230 or online via <http://www.safarimontage.com/support>.
- The SAFARI Montage SuperSet XXVII Supplemental drive is to be permanently installed in tandem with currently installed SuperSet content drives. Currently installed drives must remain in the server for the supplemental drive to function properly.
- Removal of the supplemental drive is required when replacing the primary content drive(s).

Usage Instructions

1. Shutdown the SAFARI Montage server:
 - a. Navigate to **Admin → Tools → Reboot and Shut Down**.
 - b. Click on the **Shut Down** button and verify you are shutting down the server.If performing the server shut down from the console:
 - a. Select option **#3** followed by option **#7**.
2. Insert the received SuperSet XXX Supplemental Content Drive into the next available open bay of the server. Be sure the sled latch clicks into place, ensuring proper drive seating.
3. Power on the SAFARI Montage server.
 - For customers using the following servers, see **Page 4** for additional steps needed during server boot up:
 - T-420
 - T-440X
 - RM-126X
 - RM-440X
 - RM-640
 - RM-640X
 - WAN-880X
 - WAN-1212X
 - WAN-1240
 - For customers using the following server, see **Page 5** for additional steps needed during server boot up:
 - WAN-1212

4. Log in to the SAFARI Montage web interface with Administrator privileges.
5. Navigate to **ADMIN -> Tools -> System Volumes**.
6. Click on the **Manage Supplemental Drives** link at the top of the page.



7. Link the supplemental drive to the installed content drive(s) by clicking on the **Link** action. When linking is complete, click **Return to Supplemental Drive Management** to verify the link status and link an additional drive.
Note: One supplemental drive can be linked to only one high resolution content drive and one low resolution content drive. If multiple content drives exist, multiple supplemental drives can be installed and linked.

Manage Supplemental Content Drives			
One Supplemental Drive can be linked to a maximum of one High Resolution content drive and one Low/Medium Resolution content drive.			
Supplemental Drive	Volume	Status	Actions
SS25 1TB Supplemental Content Drive (mnt0a4.bde)	MontageSuperSe000V_2TB (mnt0a2.bde)	Not Linked	Link
	MontageSuperSe000V_2TB_HRES (mnt0a3.bde)	Not Linked	Link

Unlinked Supplemental Drives

Manage Supplemental Content Drives			
Complete			
Return to Supplemental Drive Management			

Supplemental Drive Link Complete

Manage Supplemental Content Drives			
Linking drives mnt0a2.bde mnt0a4.bde			
Return to Supplemental Drive Management			

Supplemental Drive Linking

Manage Supplemental Content Drives			
One Supplemental Drive can be linked to a maximum of one High Resolution content drive and one Low/Medium Resolution content drive.			
Supplemental Drive	Volume	Status	Actions
SS25 1TB Supplemental Content Drive (mnt0a4.bde)	MontageSuperSe000V_2TB (mnt0a2.bde)	Linked	Unlink
	MontageSuperSe000V_2TB_HRES (mnt0a3.bde)	Linked	Unlink

Supplemental Drives Linked

8. After supplemental drive linking is complete, activate all new packages – **ADMIN > Content & Modules > Activate ALL**.
Note: New package licensing has been pre-entered and is ready to activate.
- For customers using the **SAFARI Montage WAN Manager** module, continue with **Steps 9 and 10**; else skip to **Step 11**.
9. Assign new packages, mirroring assignments for retiring packages – **ADMIN > WAN Manager > Schools**. A Package map of new and retiring packages is on page 3.
10. Un-assign retiring packages from all schools – **ADMIN > WAN Manager > Schools**.
11. Deactivate retiring packages – **ADMIN > Content & Modules > Content Packages**.
12. Remap Playlists and Lessons by navigating to **ADMIN > Tools > System Volumes** and clicking on the **Map Playlist and Lesson Items** link.

~ THIS COMPLETES THE DRIVE INSTALLATION ~

PACKAGE MAP

- Notes:**
- 300K Spanish packages may be omitted for customers that have licensed the following as Spanish titles are now included in the 300K versions of these packages. For all other packages, 300K Spanish package must remain.
 - K-8 Super Core (2014)
 - K-12 Super Core (2014)
 - 9-12 Super Core (2014)
 - 9-12 Expansion (2014)
 - Each package listed below refers to all formats and bit rates for the noted package.

New Packages Will Activate Upon "Activate All"		Replaces These Package(s), Which Are to Be Unassigned & Deactivated
G112906xx – Core K-8 Content Package (2014)	>	All prior versions of Core K-8 Content Packages, Reading Rainbow Content Packages, Eyes on the Prize Content Packages
G198004xx – K-8 Super Core (2014)	>	All prior versions of Core K-8, K-8 Super Core, Reading Rainbow, Eyes on the Prize and K-6 Supplemental , whose new name is K-8 Expansion .
G198103xx – K-8 Expansion (2014)	>	All prior versions of K-6 Supplemental All prior versions of K-8 Expansion
G113305xx - Core 9-12 Content Package (2014)	>	All prior versions of 9-12 Core Content Packages and Eyes on the Prize Content Packages
G129806xx - 9-12 Super Core Content Package (2014)	>	All prior versions of 9-12 Super Core Content Packages, Eyes on the Prize Content Packages All versions of G1121 - Additional SM 9-12 G1298S02MN - 9-12 Super Core Content Package (Spanish)
G129406xx – 9-12 Expansion (2014)	>	All prior versions of 9-12 Expansion All versions of G1121 - Additional SM 9-12
G112506xx - CORE K-12 Content Package (2014)	>	All prior versions of Core K-12 Content Packages, Rainbow Content Packages and Eyes on the Prize Content Packages
G131806xx - K-12 Super Core Content Package (2014)	>	All prior versions of Core K-12 Content Packages, K-12 Super Core Content, Reading Rainbow Content Packages and Eyes on the Prize Content Packages All versions of G1121 - Additional SM 9-12 G1311S02MN K-12 Super Core Content Package (Spanish)
G126405xx - Cyber-Science Interactive 3D Model Package (2014)	>	All prior versions of Cyber-Science Interactive 3D Model Package Note: Remap prior package titles using Admin > Tools > System Volumes > Map Playlist and Lesson Items to Cyber-Science 2014 Package
G974308xx - American Schools Overseas K-8 (2014)	>	All prior versions of American Schools Overseas K-8
G974708xx - American Schools Overseas 9-12 (2014)	>	All prior versions of American Schools Overseas 9-12
G975608xx - American Schools Overseas K-12 (2014)	>	All prior versions of American Schools Overseas K-12
G980408xx - Canadian K-9 Content Package (2014)	>	All prior versions of Canadian K-9 Content Package
G981208xx - Canadian 9-12 Content Package (2014)	>	All prior versions of Canadian 9-12 Content Package
G980808xx - Canadian K-12 Content Package (2014)	>	All prior versions of Canadian K-12 Content Package
G122502 – Visual Dictionary Interactive Image Package (2014)	>	Prior version of Visual Dictionary Interactive Note: All prior version references will be mapped to Visual Dictionary 2014 references

For the following servers, Virtual Disk Management will need to be configured:

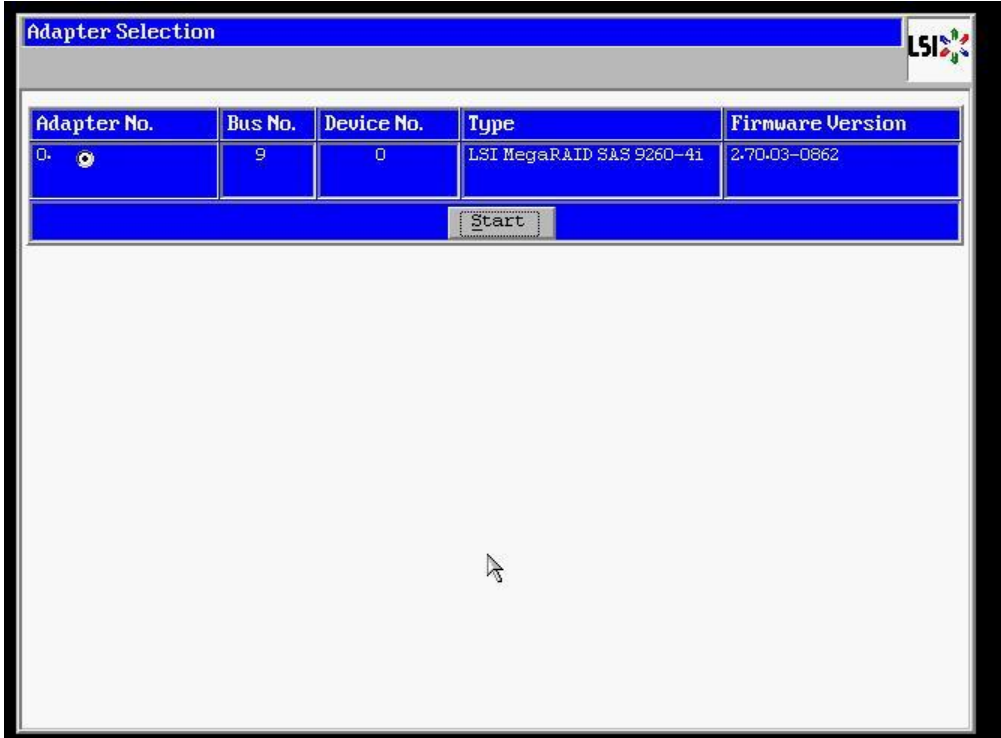
- T-420
- T-440X
- RM-126X
- RM-440X
- RM-640
- RM-640X
- WAN-880X
- WAN-1212X
- WAN-1240

To configure the Virtual Disk Management, perform the following on system boot:

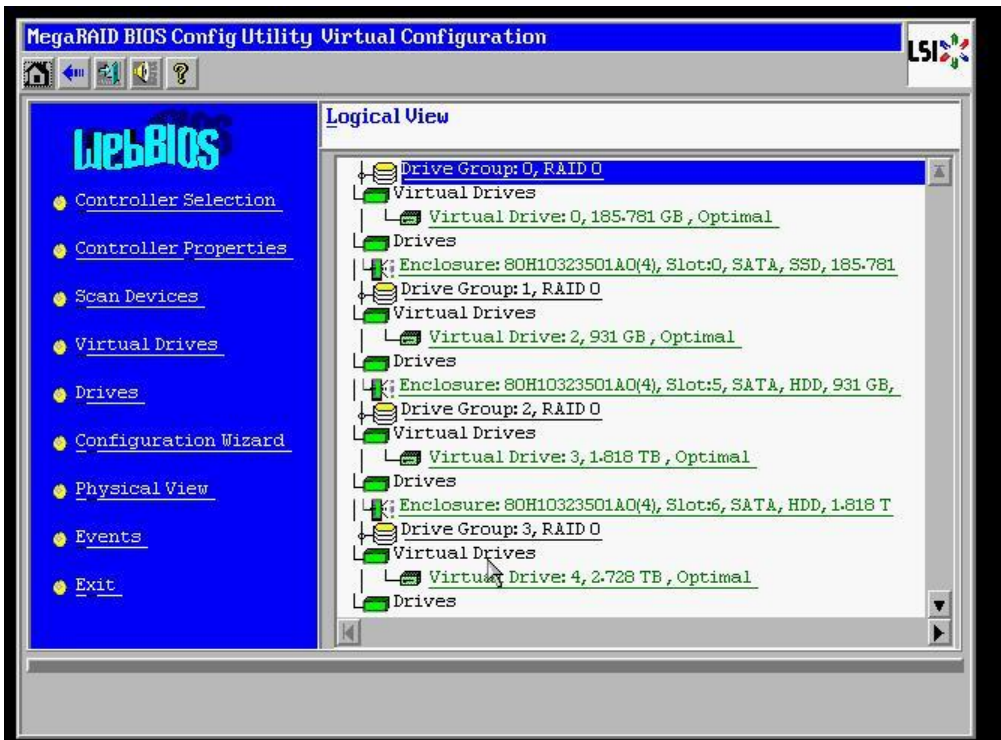
1. Press "**C**" when prompted regarding a foreign configuration has been found or VD's are missing.
2. Use the arrow keys and navigate the PERC adapter BIOS screen and select **Controller 0**.
3. Press the **F2** key to open a sub-menu and choose **Foreign Config** from the options.
4. Select Import from the Foreign Config sub-menu.
5. Use the arrow keys and select **Yes** and press the enter key.
6. Press the ESC key and select OK.
7. Press <CTRL +ALT+DEL> to reboot the server.

For the WAN-1212 server, MegaRAID Bios will need to be configured. To configure the MegaRAID BIOS, perform the following on system boot:

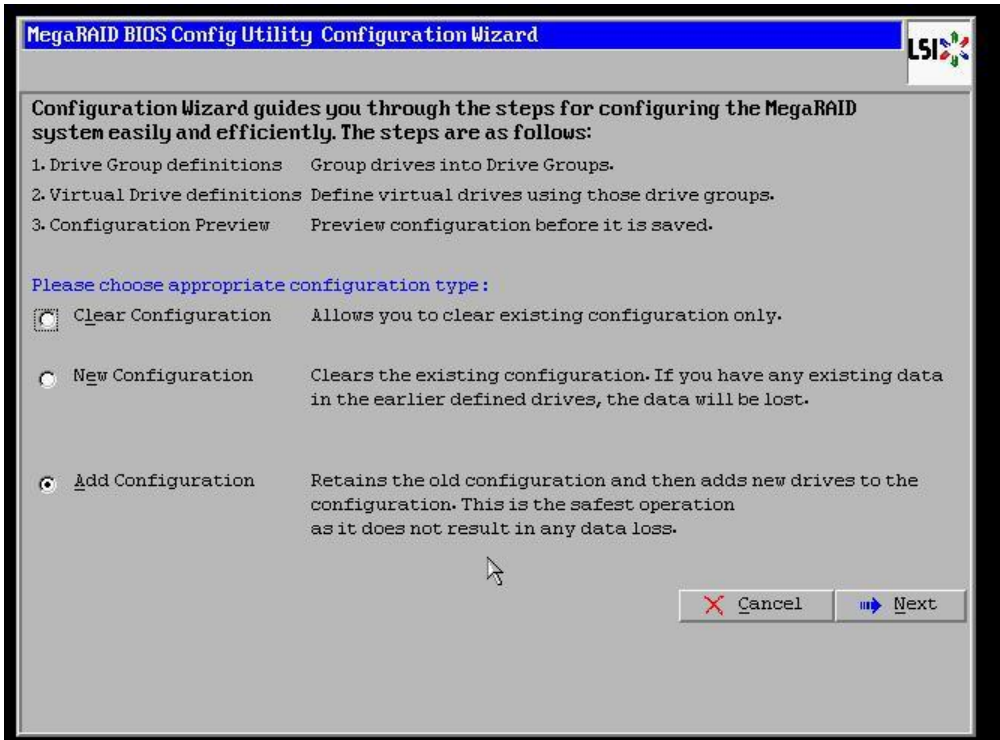
1. Press "C" when prompted, regarding the finding of a foreign configuration or missing VD's.
Note: Access to the LSI MegaRAID SAS controller can also be initiated by pressing <Ctrl>+<H> when prompted.
2. Click **Start** button to access MegaRAID BIOS Config Utility.



3. Click **Configuration Wizard** link from Navigation to access to the Configuration Wizard.



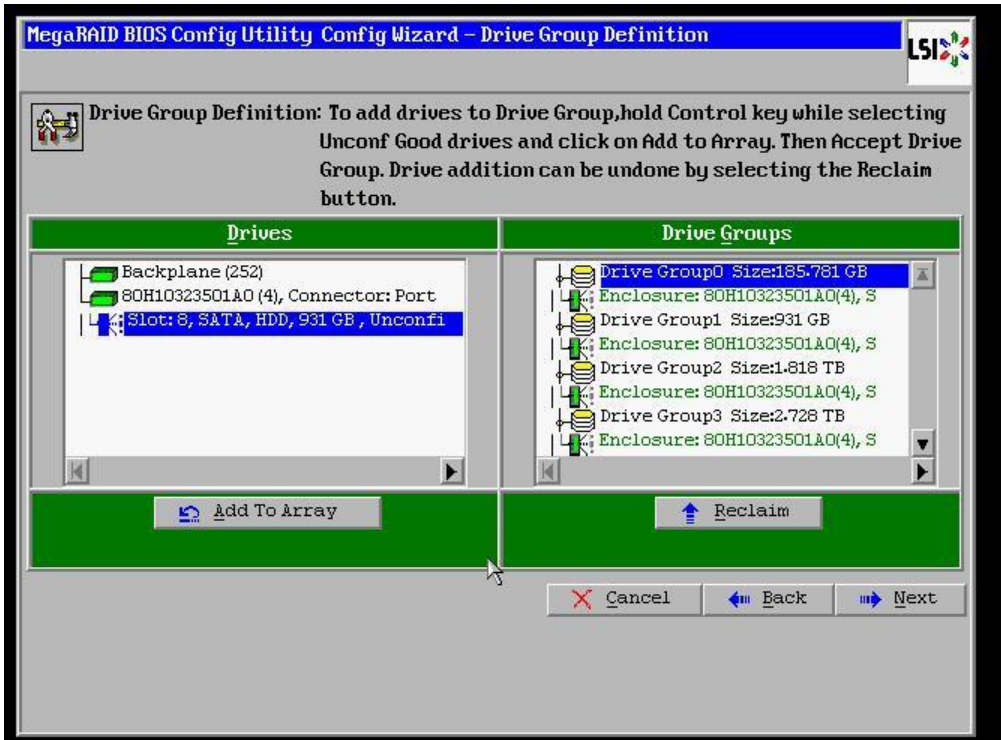
4. Select **Add Configuration** and click **Next**.



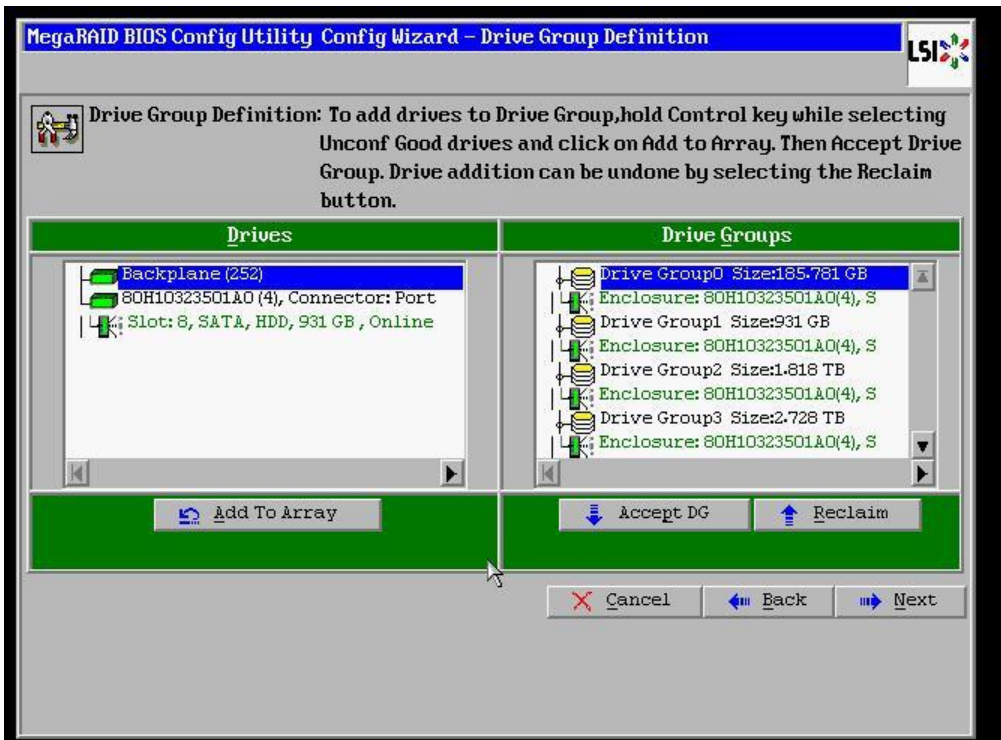
5. Select **Manual Configuration** under the Configuration Method and click **Next** to continue.



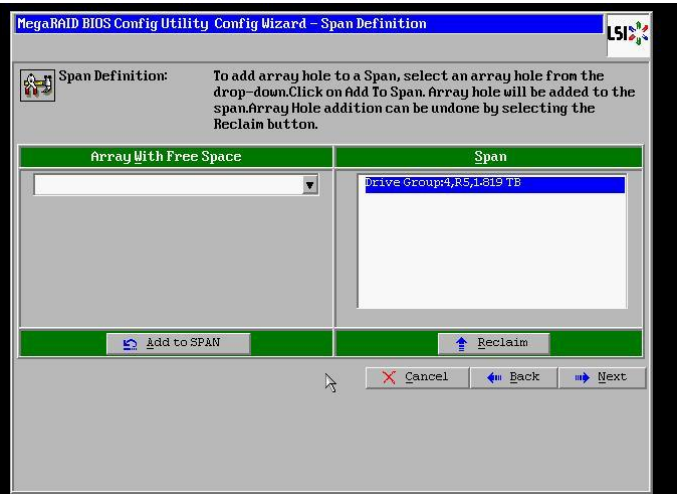
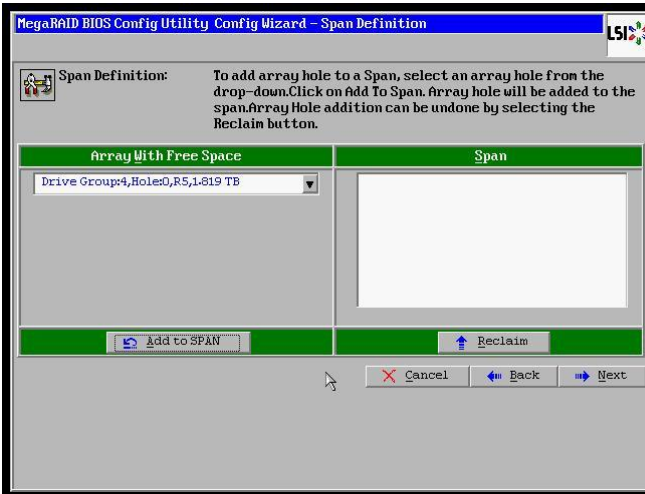
6. Select the install hard drive from the **Drives** list and click the **Add to Array** button.



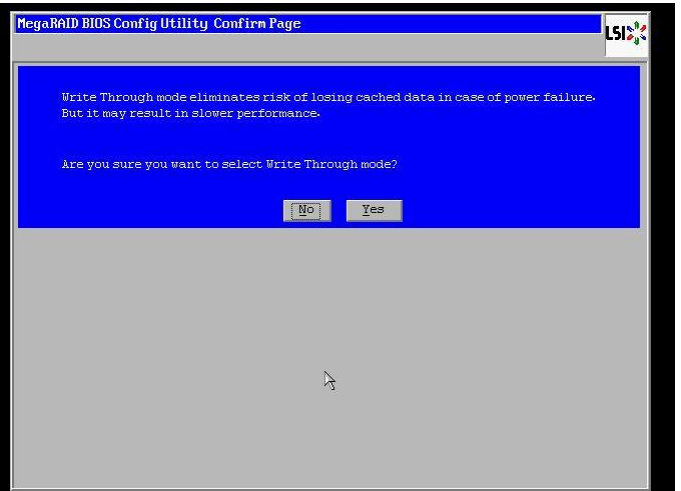
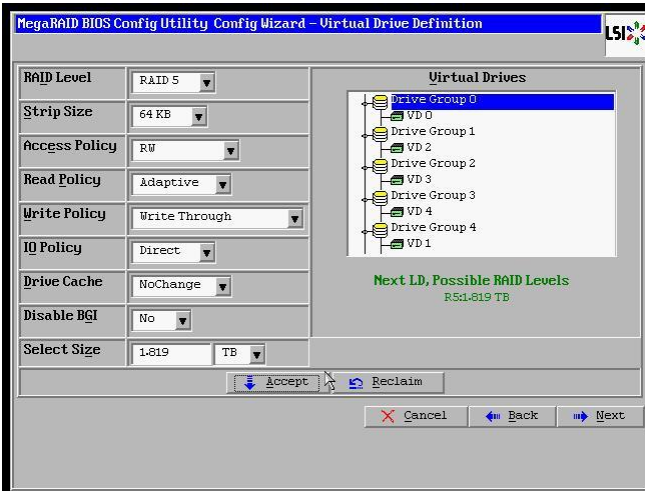
7. Click on the **Accept DG** button, to accept the Drive Group from under the **Drive Groups** and click **Next** to continue.



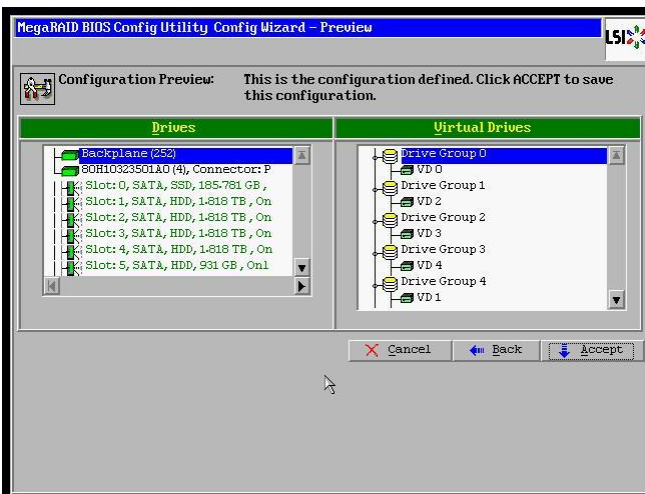
- Select the hard drive from the **Array With Free Space** drop down and click the **Add to SPAN** button. Click **Next** to continue.



- Click on the **Accept** button to save the drive configuration. Click on the **Yes** button when prompted regarding use of **Write Through mode**. Click on **Next** to continue.



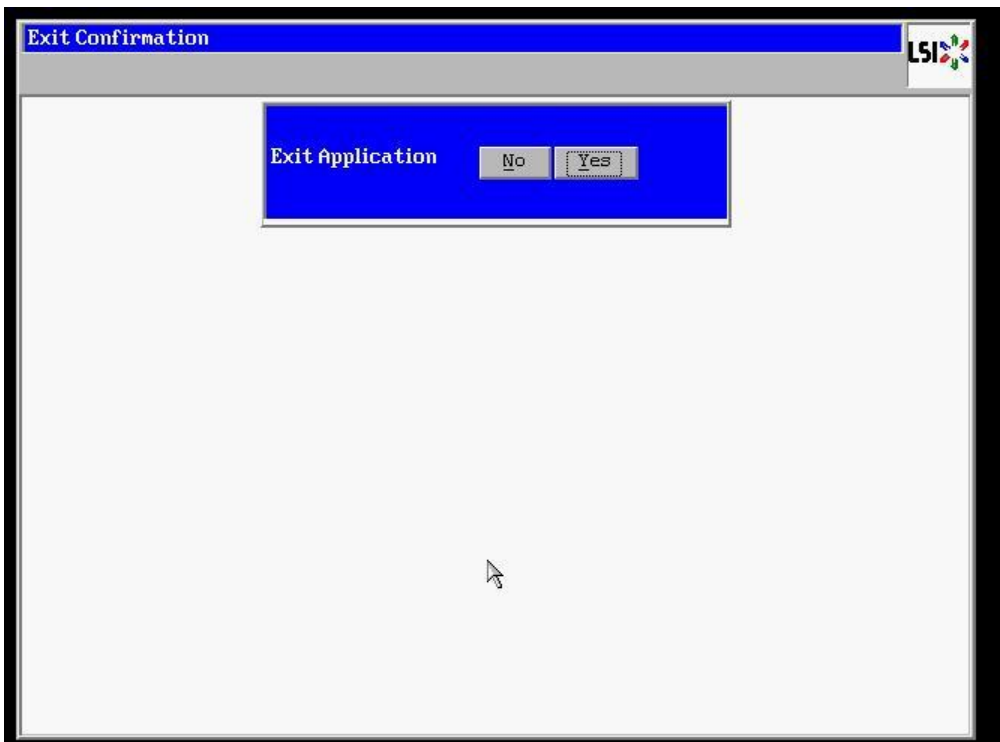
- Click **Accept** to save the virtual drive configuration. Click **Yes** to confirm the save.



11. Click **No** when asked to initialize the virtual drive.



12. Click on the **Exit** link, from the left-hand navigation, followed by clicking the **Yes** button.



13. Press <CTRL>+<ALT>+<DELETE> to restart the server.

