

Instructions for Installing the SAFARI Montage® SuperSet XXXII Content Drive

CONTENTS:

- SAFARI Montage SuperSet XXXII Content Drive(s)

PLEASE READ THESE INSTRUCTIONS IN THEIR ENTIRETY BEFORE YOU BEGIN:

- **SuperSet XXXII requires SAFARI Montage version 6.2.20 or later.** If you are currently running a version prior to 6.2.20, you will need to upgrade your server before installing your new content drives.
- Please contact Technical Support if you have any questions regarding the current status of your SAFARI Montage server, to schedule an upgrade, or to review any questions you may have before installing your new content drives.
- SAFARI Montage Technical Support is available Monday – Friday from 8 a.m. to 6 p.m. Eastern Time, and they may be contacted by telephone at 800-782-7230 or online via <http://www.safarimontage.com/support>.

UPGRADE INSTRUCTIONS:

1. Shut down the SAFARI Montage server:
 - a. If performing the server shut down from the **web interface**:
 - i. Navigate to **ADMIN > Tools > Reboot and Shut Down**.
 - ii. Click on the **Shut Down** button
 - iii. Click **Shut Down** again to verify that you wish to shut down the server.
 - b. If performing the server shut down from the **console**:
 - i. Select option **#3 Advanced**, followed by option **#7 Shut Down**.
2. Remove all prior SuperSet content drives from the server. **Do NOT remove CreationStation drives.**
3. Drive configuration requirement vary depending on your server model. Identify your server model and follow the appropriate instructions below.
 - a. **Dell-manufactured servers:** If installing content drive(s) in one of the following models, please proceed to **page 4** to complete additional drive configuration steps, before returning here to continue at step 4.

- | | | |
|----------|-----------|-------------|
| • T-420 | • RM-440X | • WAN-880X |
| • T-440X | • RM-640 | • WAN-1240 |
| • T-86X | • RM-640X | • WAN-1212X |
| | • RM-126X | • WAN-1216X |
| | • RM-128X | |

- b. **WAN-1212:** If installing content drive(s) in a WAN-1212, please proceed to **page 5** to complete additional drive configuration steps, before returning here to continue at step 4.
- c. If installing in any other model server:
 - i. Insert the received SuperSet XXXII Content Drive(s) into the next available open bay(s) of the server. Make certain that each drive sled latch clicks into place, ensuring proper drive seating.

Note: If installing this drive into a **RM-820** or **WAN-840**, the drive must be installed in bay 1, 2, 3 or 4 as shown below:

Bay 4	Bay 5	Bay 6	Bay 7
Bay 0 / OS Drive	Bay 1	Bay 2	Bay 3

- ii. Power on the server.
4. Login to SAFARI Montage and activate new packages by navigating to **ADMIN > Content & Modules > Activate All**.

Note: New package licensing has been pre-entered and is ready to activate when the new content drive has been installed.

5. For customers using the SAFARI Montage WAN Manager Module, proceed as follows; otherwise, skip to Step 6.
 - a. Assign new packages, mirroring assignments for retiring packages by navigating to **ADMIN > WAN Manager > Schools**. A package map of new and retiring packages is included for reference on the following page.
 - b. Un-assign retiring packages from all schools by navigating to **ADMIN > WAN Manager > Schools** and adjusting assignments.
6. Deactivate retiring packages by navigating to **ADMIN > Content & Modules > Content Packages** and clicking Deactivate for each retired package.
7. Finally, remap Playlists and Lessons to the new package content by navigating to **ADMIN > Tools > System Volumes** and clicking the **Map Playlist and Lesson Items** link.

~ THIS COMPLETES THE DRIVE INSTALLATION PROCESS~

PACKAGE MAP

Notes:

- 300K **Spanish** packages may be deactivated for all packages below as Spanish titles are included in new packages.
- Each package listed below refers to all formats and bitrates for the noted package.

New Packages, Which Will Activate Upon "Activate All"		Replaces These Package(s), Which Are to Be Unassigned & Deactivated
G112907xx – Core K-8 Content Package (2015)	>	All prior versions of Core K-8 Content Packages, Reading Rainbow Content Packages, Eyes on the Prize Content Packages
G198005xx – K-8 Super Core (2015)	>	All prior versions of Core K-8, K-8 Super Core, Reading Rainbow, Eyes on the Prize and K-6 Supplemental , whose new name is K-8 Expansion .
G198104xx – K-8 Expansion (2015)	>	All prior versions of K-6 Supplemental All prior versions of K-8 Expansion
G113306xx - Core 9-12 Content Package (2015)	>	All prior versions of 9-12 Core Content Packages and Eyes on the Prize Content Packages
G129807xx - 9-12 Super Core Content Package (2015)	>	All prior versions of 9-12 Super Core Content Packages, Eyes on the Prize Content Packages All versions of G1121 - Additional SM 9-12 G1298S02MN - 9-12 Super Core Content Package (Spanish)
G129407xx – 9-12 Expansion (2015)	>	All prior versions of 9-12 Expansion All versions of G1121 - Additional SM 9-12
G112507xx - Core K-12 Content Package (2015)	>	All prior versions of Core K-12 Content Packages, Rainbow Content Packages and Eyes on the Prize Content Packages
G131807xx - K-12 Super Core Content Package (2015)	>	All prior versions of Core K-12 Content Packages, K-12 Super Core Content, Reading Rainbow Content Packages and Eyes on the Prize Content Packages All versions of G1121 - Additional SM 9-12 G1311S02MN K-12 Super Core Content Package (Spanish)
G126405xx - Cyber-Science Interactive 3D Model Package (2014)	>	All prior versions of Cyber-Science Interactive 3D Model Package Note: Remap prior package titles using Admin > Tools > System Volumes > Map Playlist and Lesson Items to Cyber-Science 2014 Package
G974309xx - American Schools Overseas K-8 (2015)	>	All prior versions of American Schools Overseas K-8
G974709xx - American Schools Overseas 9-12 (2015)	>	All prior versions of American Schools Overseas 9-12
G975609xx - American Schools Overseas K-12 (2015)	>	All prior versions of American Schools Overseas K-12
G980409xx - Canadian K-9 Content Package (2015)	>	All prior versions of Canadian K-9 Content Package
G981209xx - Canadian 9-12 Content Package (2015)	>	All prior versions of Canadian 9-12 Content Package
G980809xx - Canadian K-12 Content Package (2015)	>	All prior versions of Canadian K-12 Content Package
G122502 – Visual Dictionary Interactive Image Package (2014)	>	Prior version of Visual Dictionary Interactive Note: All prior version references will be mapped to Visual Dictionary 2014 references
G1302MN – Career Clips Content Package (300k)	>	All prior versions Career Clips Content Packages
G999202N – National Archives Digital Resources (2015)	>	All prior versions of Digital Resources from the National Archives
G200902N – TED-Ed Web Links (2015)	>	All prior versions of TED-Ed Web Links

For the following Dell-manufactured servers, Virtual Disk Management will need to be configured:

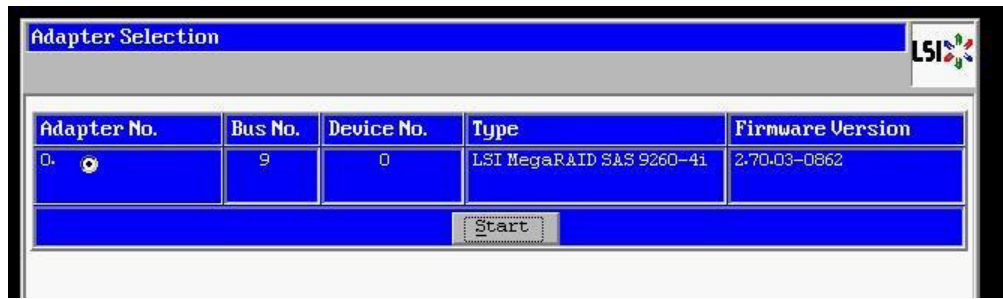
- T-420
- T-440X
- T-86X
- RM-440X
- RM-640
- RM-640X
- RM-126X
- RM-128X
- WAN-880X
- WAN-1240
- WAN-1212X
- WAN-1216X

To do so, perform the following on system boot:

1. Insert all new content drive(s) into the next available open bay(s) of the server. Make certain that each drive sled latch clicks into place, ensuring proper drive seating.
2. Power on the server.
3. When prompted, press **<CTRL>+<R>** to access Virtual Disk Management. If prompted, press **<C>** and/or **<Y>** when accessing Virtual Disk Management.
4. Use the arrow keys and navigate the Virtual Disk Management screen and select the **PERC controller** (top node).
5. Press **<F2>** to open the properties sub-menu and choose **“Foreign Config”**.
 - a. If **“Foreign Config”** is un-selectable and **“Unconfigured Physical Disks”** appear in Virtual Disk Management, continue to step 6
6. Select **Clear** from the Foreign Config sub-menu.
7. Use the arrow keys to select **“Yes”** and press **<Enter>**.
 - a. **“Unconfigured Physical Disks”** will appear in Virtual Disk Management
8. Use the arrow keys and navigate the Virtual Disk Management screen and select the **PERC controller** (top node).
9. Press the **<F2>** to open the properties sub-menu and choose **“Create New VD”**.
10. Using the **<Tab>** key, navigate to the **“Physical Disk”** list and select the first disk in the list (use the spacebar to select).
11. Using the **<Tab>** key, navigate to **“OK”** and press **<Enter>**.
12. Use the arrow keys to select **“Yes”** and press **<Enter>** when prompted about skipping initialization.
 - a. New VD will appear in Virtual Disk Management.
13. Repeat steps 6 through 10 for all remaining **“Unconfigured Physical Disks”**. When all unconfigured disks have been added as Virtual Disks, continue to step 12.
14. Press **<ESC>** key and select **“OK”** to exit Virtual Disk Management.
15. Press **<CTRL +ALT+DEL>** to reboot the server.
16. Return to step 4 on **page 2**.

For the WAN-1212 server, the MegaRAID BIOS will need to be configured. To do so, perform the following on system boot prior to installing any new drives:

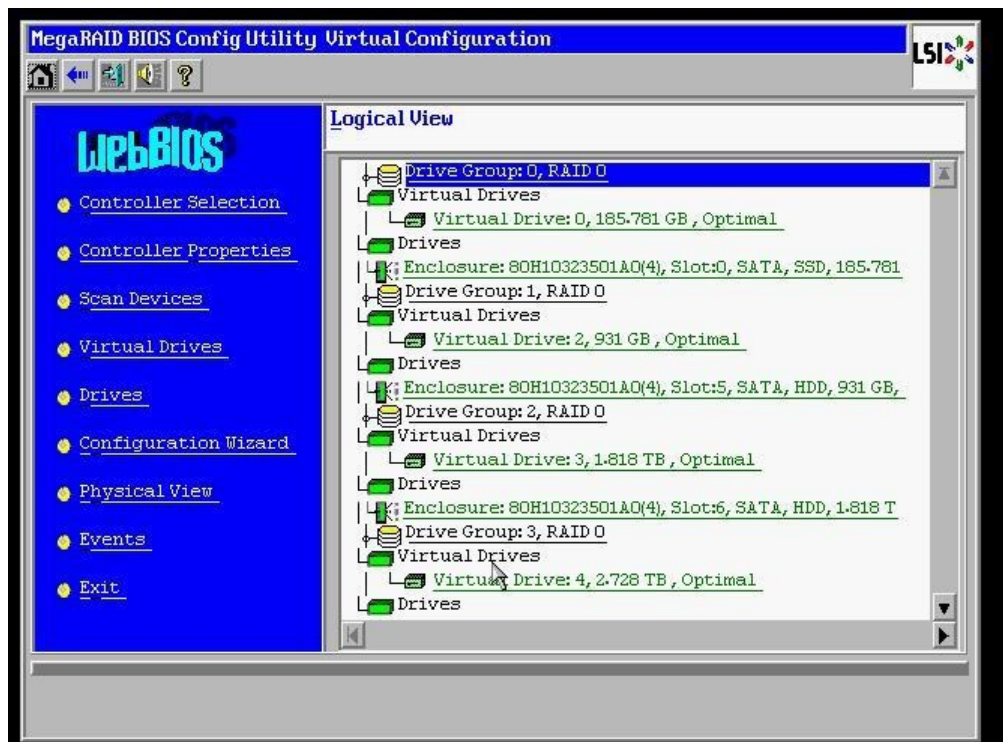
1. Access the LSI MegaRAID SAS controller BIOS by pressing **<Ctrl>+<H>** when prompted during boot up.
2. Click the **Start** button to access MegaRAID BIOS Config Utility.



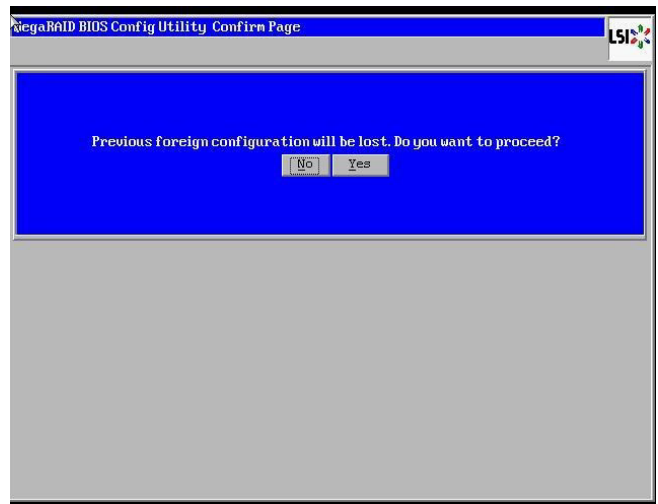
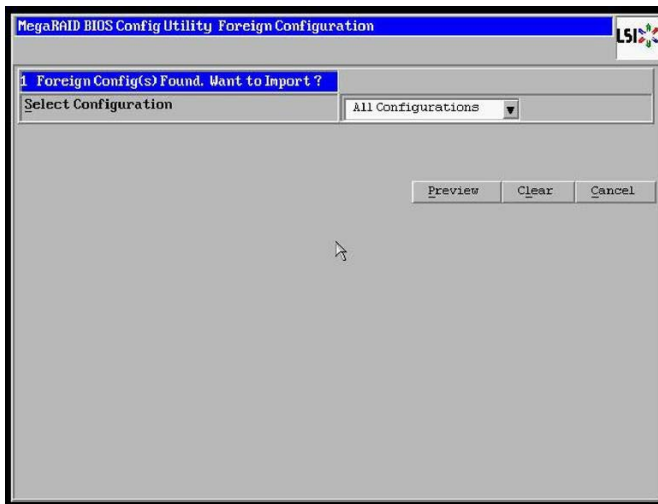
3. Insert a single new content drive into the next available open bay of the server. Make certain that each drive sled latch clicks into place, ensuring proper drive seating.

Wait approximately 30 seconds and then click the **Scan Devices** link from Navigation to access to the Foreign Configuration page.

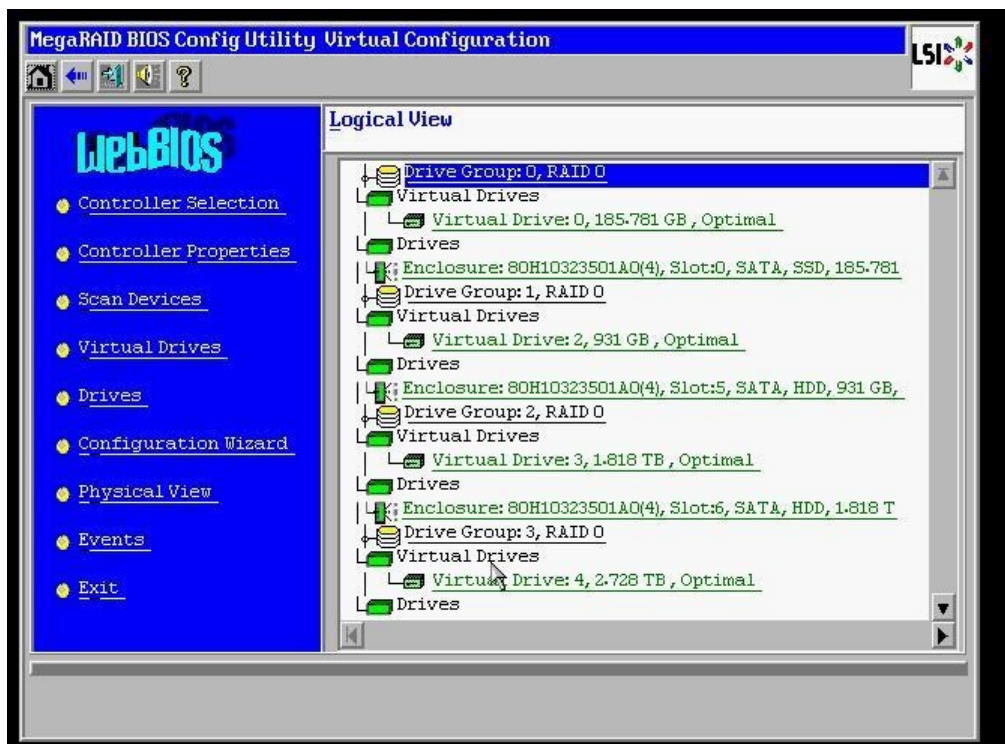
Note: If you have more than one new drive you will repeat steps 3 through 15 for each drive.



- When prompted, click on the **Clear** button to clear the foreign configuration of the drive. Then click **Yes** to confirm and return to the Logical View.



- Click **Configuration Wizard** link from Navigation to access the Configuration Wizard.



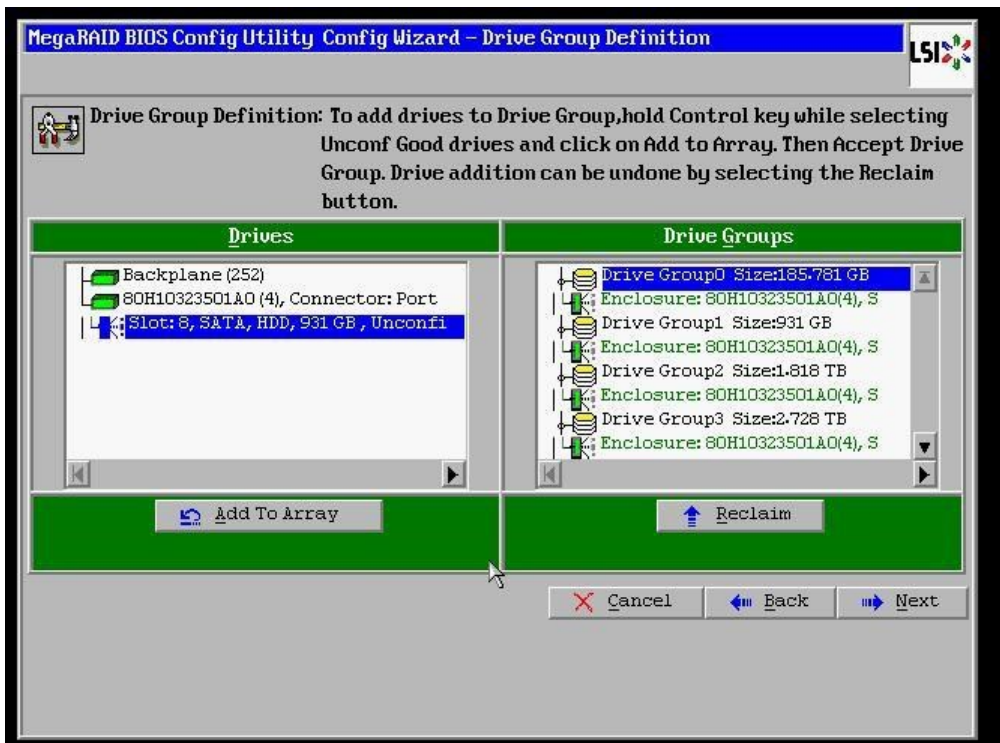
6. Select **Add Configuration** and click **Next** to continue.



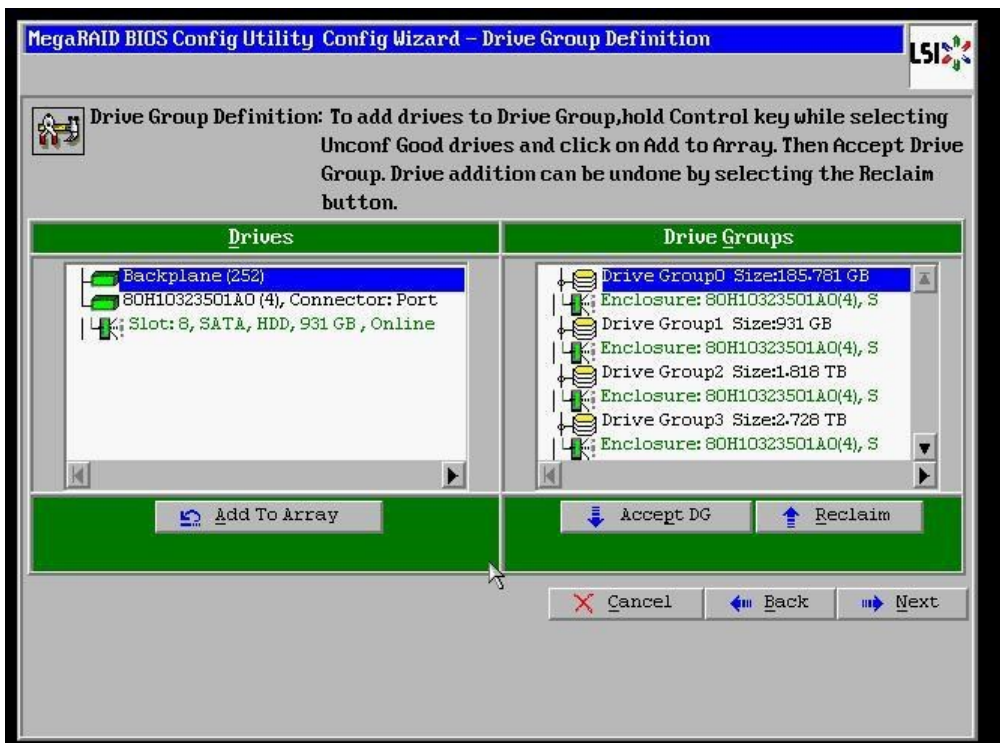
7. Select **Manual Configuration** under the Configuration Method and click **Next** to continue.



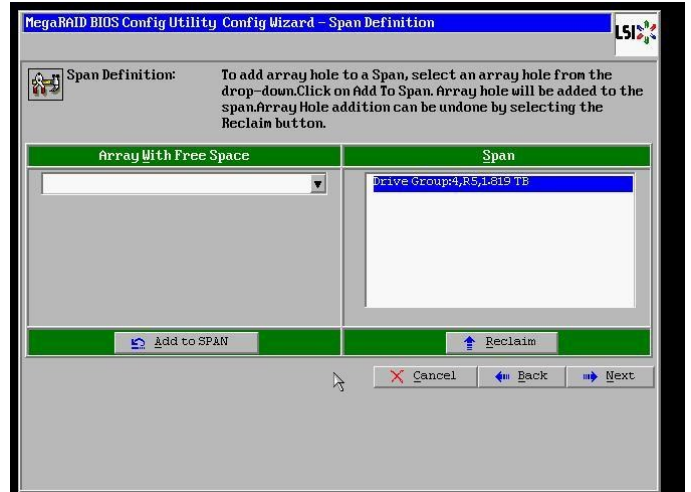
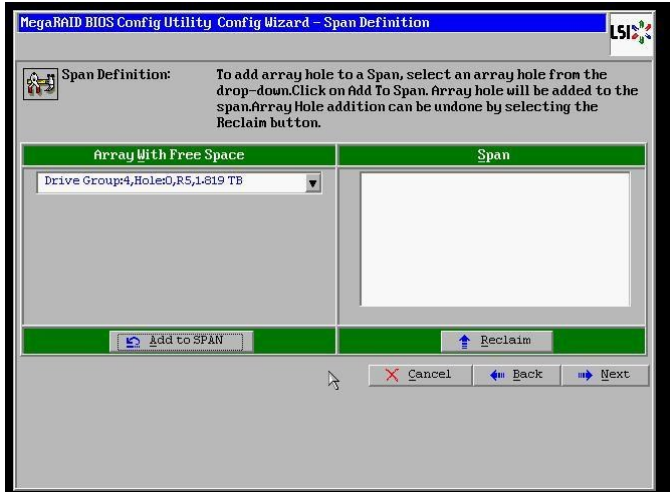
8. Select the newly installed hard drive from the **Drives** list and click the **Add To Array** button.



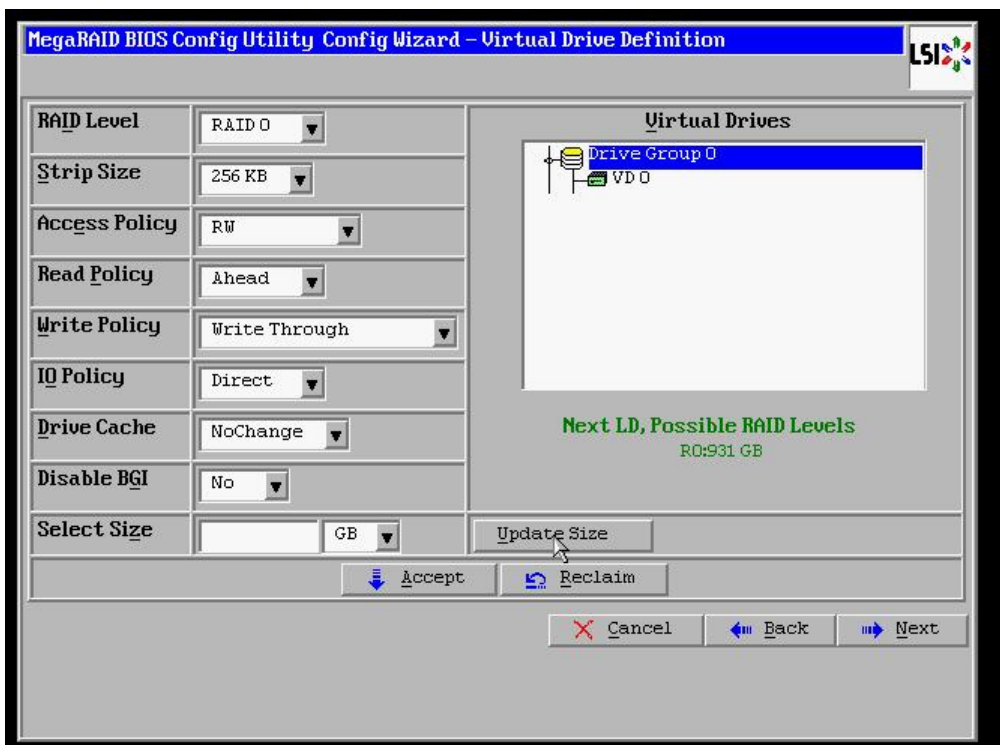
9. Click on the **Accept DG** button, to accept the Drive Group from under the **Drive Groups** and click **Next** to continue.



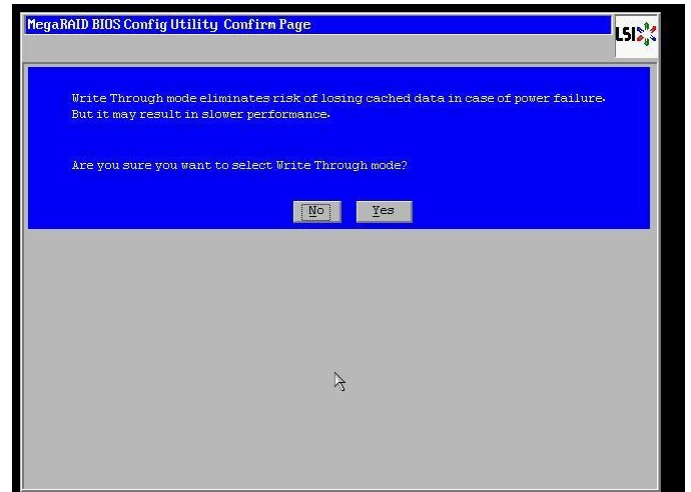
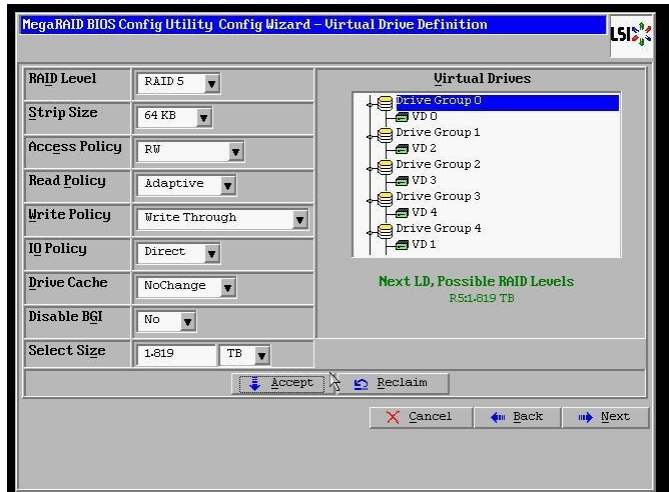
10. Select the hard drive from the **Array With Free Space** drop down and click the **Add to SPAN** button. The hard drive should move to the **Span** window. Click **Next** to continue.



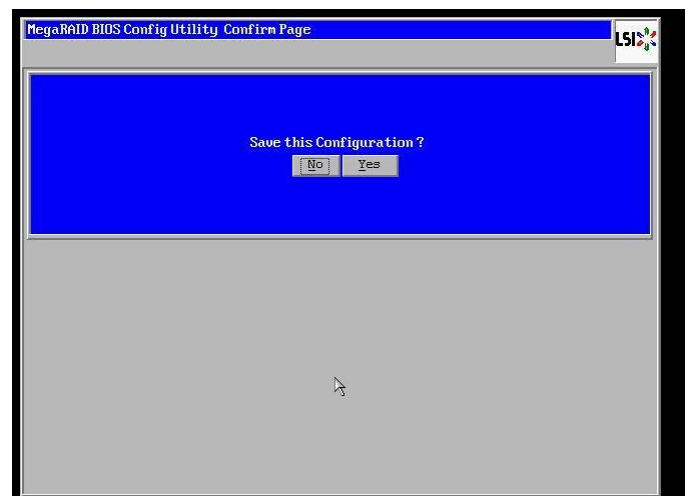
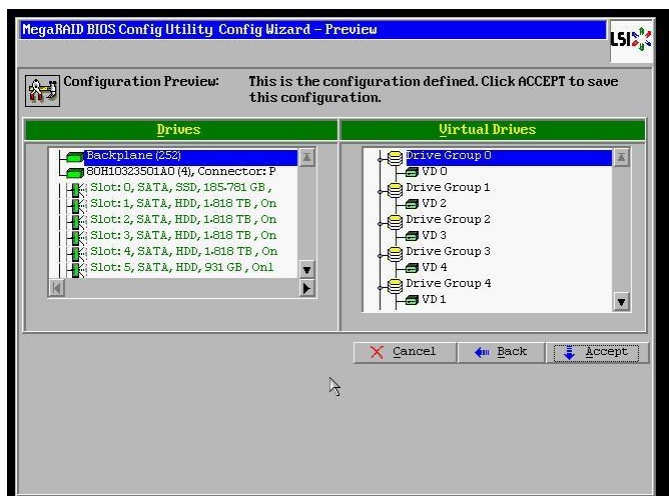
11. Click on the **Update Size** button.



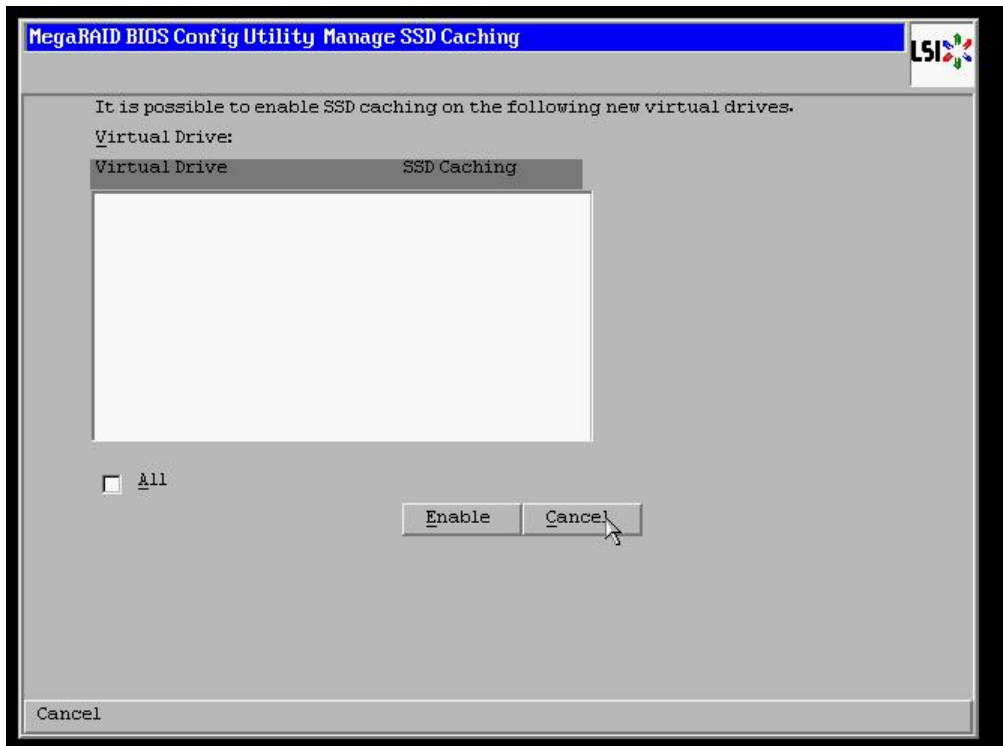
12. Click on the **Accept** button to save the drive configuration. Click on the **Yes** button when prompted regarding use of **Write Through mode**. Click on **Next** to continue.



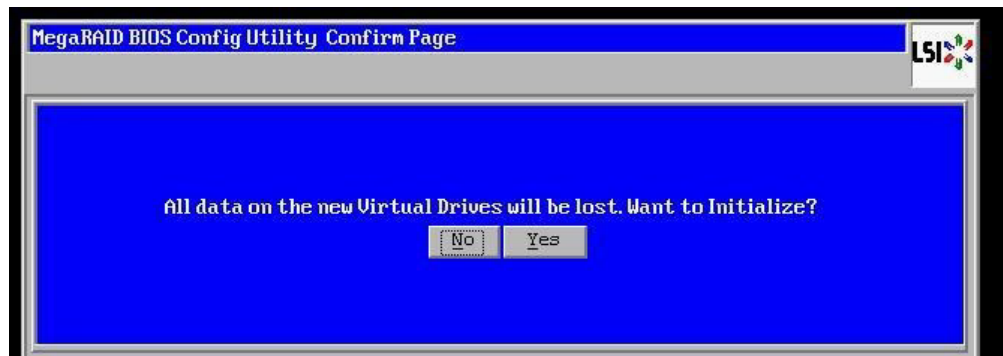
13. Click **Accept** to save the virtual drive configuration and then click **Yes** to confirm.



14. Click **Cancel** when asked to enable SSD caching.

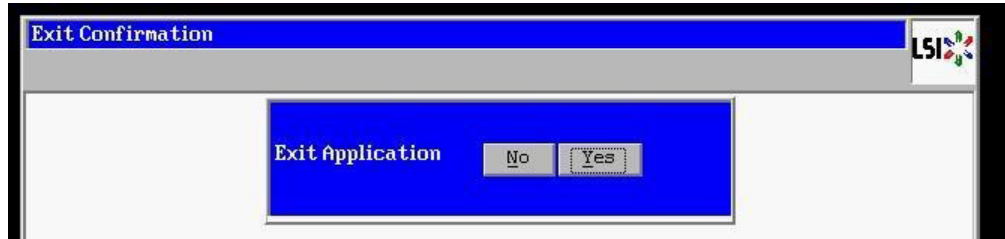


15. Click **No** when asked to initialize the virtual drive.

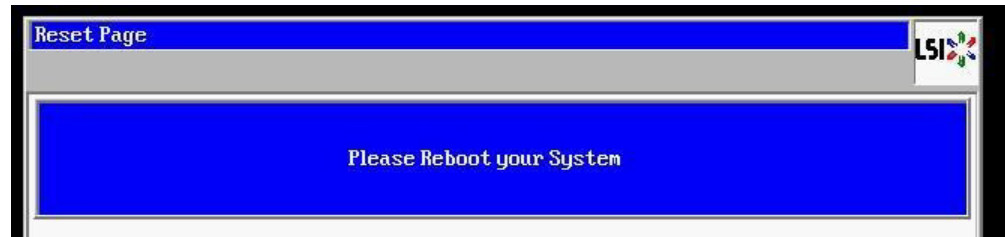


Note: If installing multiple drives return to step 3 now and repeat for each new drive.

16. When all new content drives have been configured, click the **Exit** link in the left-hand navigation and then **Yes** to confirm.



17. Press **<CTRL>+<ALT>+<DELETE>** to restart the server.



18. Return to step 4 on **page 2**.